



AVK SWING CHECK VALVE, METAL SEATED

41/36

Right hand side lever and weight, DN 350-600, PN10/16

001

AVK series 41 swing check valves come with both metal and resilient seats. Installed in pumping applications to prevent back flow they can be used for drinking water as well as waste water. The disc is connected to the shaft via a flexible bush that allows disc and valve seat to adjust exactly. All interior parts are stainless steel or coated with drinking water approved epoxy or EPDM. The series 41 valves are available with either closed bushings or protruding shaft end where a lever with a weight or a spring can be fitted to mitigate pressure surges.

Product Description:

Metal seated swing check valve with lever and weight for drinking water and neutral liquids to max. 70°C

Standards:

- Designed according to EN 1074 - 3
- Face to face according to EN 558 Table 2 Basic Series 48
- Standard flange drilling to EN1092-2 (ISO 7005-2), PN 10/16

Test/Approvals:

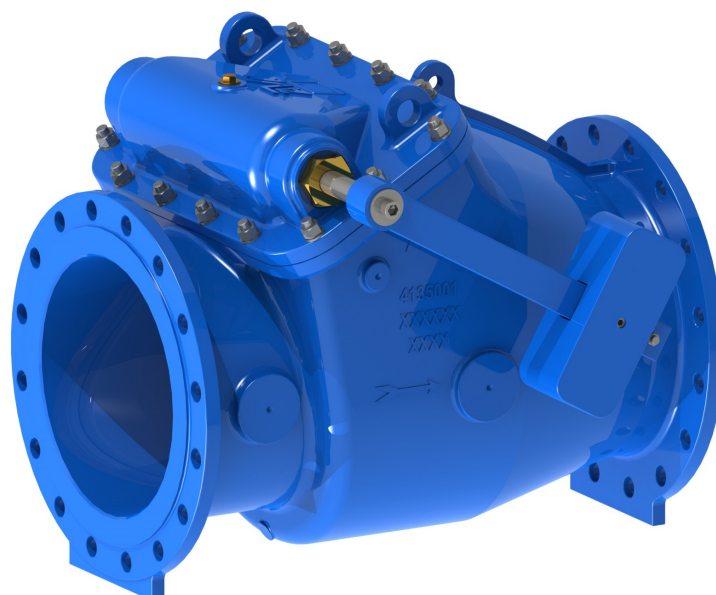
- Hydraulic test according to EN 1074-3.
- Seat: 1.1×PN (in bar), Body: 1.5×PN (in bar).

Features:

- Clear way and full bore for low head loss and easy pig-cleaning
- Metal seat in high strength alu-bronze
- Shaft in 1.4021 (AISI 420) stainless steel fitted in the bonnet allows for easy maintenance without removing valve from pipeline
- Position indicating lever with an adjustable weight that aids the disc in closing quickly to reduce water hammer
- Hinge of ductile iron coated with drinking water approved epoxy, firmly tightened around the shaft to eliminate play
- Bonnet gasket lying in a groove between bonnet and body prevents blow-out
- All seals and coatings with contact to the fluid are approved for drinking water - coating is blue, 250µm fusion bonded epoxy
- Disc mounted in a flexible rubber bushing which allows it to tilt slightly in all directions and adjust exactly to the valve seat
- Bosses on each side of the valve seat allow for installation of pressure gauge, by-pass, etc.

Accessories:

Guard around lever and weight, combi-flanges, proximity switch, flange adaptors.

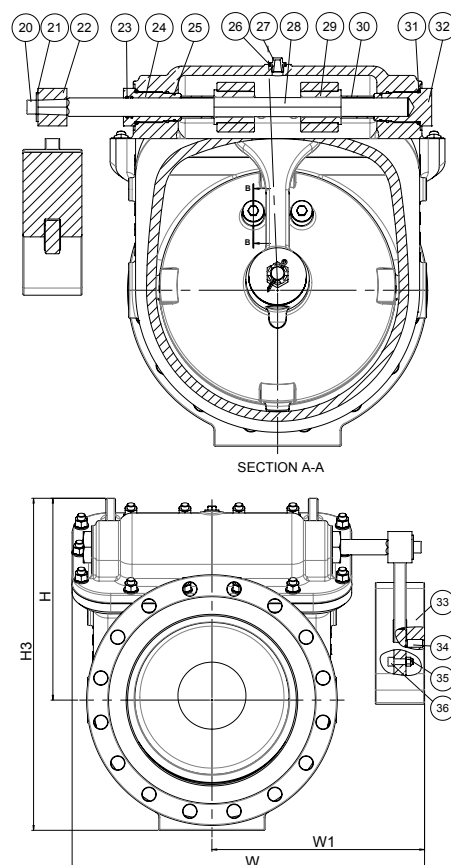
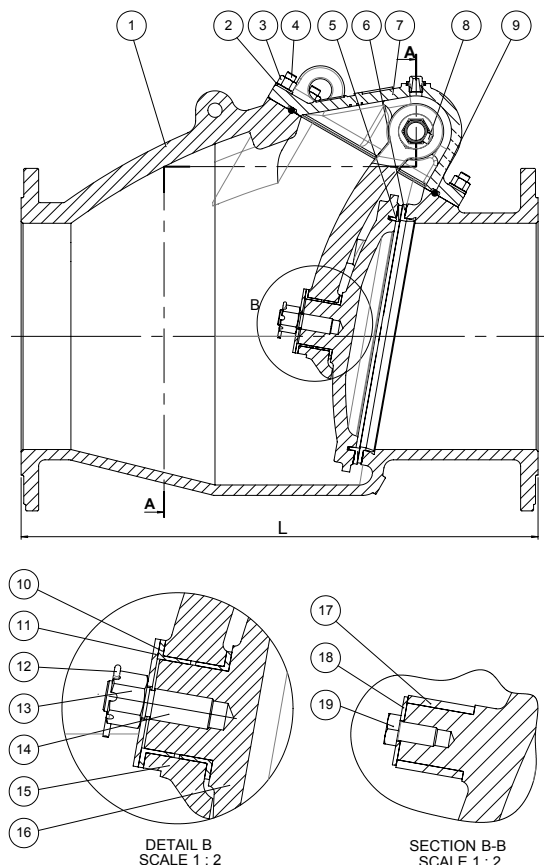


AVK SWING CHECK VALVE, METAL SEATED

Right hand side lever and weight, DN 350-600, PN10/16

41/36

001



Component List:

1. Body	Ductile iron, EN-GJS-500-7 (GGG-50)	2. Washer	Stainless steel A2
3. Nut	Stainless steel A2	4. Stud bolt	Stainless steel A2
5. Face ring	Al. Bronze; EN1982; CC331G(AB1)	6. Seat ring	Al. Bronze; EN1982; CC331G(AB1)
7. Bonnet	Ductile iron, EN-GJS-500-7 (GGG-50)	8. Bolt	Stainless steel A2
9. O-cord	EPDM	10. Guide bush	EPDM
11. Washer	Stainless steel A2	12. Split pin	Stainless steel A2
13. Castle nut	Stainless steel A2	14. Stud bolt	Stainless steel A2
15. Hinge arm	Ductile iron, EN-GJS-500-7 (GGG-50)	16. Disc	Ductile iron, EN-GJS-500-7 (GGG-50)
17. Protective bush	EPDM	18. Washer	SS EN 10088-1; ASTM A276-316
19. Bolt	Stainless steel A2	20. Bolt	Stainless steel A2
21. Washer	Stainless steel A2	22. Lever	Ductile iron, EN-GJS-500-7 (GGG-50)
23. O-ring	EPDM	24. Spacer	SS 1.4404, (AISI 316)
25. O-ring	EPDM	26. Gasket	Polyamide
27. Air plug	Stainless steel	28. Stem	SS EN 10088-1; ASTM A276-420
29. Connector	SS EN 10088-1; (W1.4408)	30. Spacer	SS EN 10088-1; ASTM A276-316
31. O-ring	EPDM	32. Bushing closed	Dezn. res. brass CZ132
33. Weight	Ductile iron, EN-GJS-500-7 (GGG-50)	34. Insex	Stainless steel A2
35. Nut	Stainless steel A2	36. Bolt	Stainless steel A2

Components may be substituted with equivalent or higher class materials without prior notification.

Reference Nos. and Dimensions:

The designs, materials and specifications shown are subject to change without notice. This is due to the continuous development of our product programme.

AVK ref. nos	DN mm	Flange drilling	L mm	H mm	H3 mm	W mm	W1 mm	Theoretic. weight kg
41-350-36-00800	350	PN10	800	419	689	731	441	337
41-350-36-01800	350	PN16	800	419	689	731	441	339
41-400-36-00800	400	PN10	900	470	765	801	476	447
41-400-36-01800	400	PN16	900	470	765	801	476	447
41-450-36-00800	450	PN10	1000	518	843	871	511	575
41-450-36-01800	450	PN16	1000	518	843	871	511	583
41-500-36-00800	500	PN10	1100	570	935	931	541	802
41-500-36-01800	500	PN16	1100	570	935	931	541	812
41-600-36-00800	600	PN10	1300	630	1060	1045	598	992
41-600-36-01800	600	PN16	1300	630	1060	1045	598	1018