



AVK SWING CHECK VALVE, METAL SEATED, PN 10/16

41/36-003

Right side lever and weight, 1.4404.shaft, A4 bolts, DN 350-600

AVK series 41 swing check valves come with both metal and resilient seats. Installed in pumping applications to prevent back flow they can be used for drinking water as well as waste water. The disc is connected to the shaft via a flexible bush that allows disc and valve seat to adjust exactly. All interior parts are stainless steel or coated with drinking water approved epoxy or EPDM. The series 41 valves are available with either closed bushings or protruding shaft end where a lever with a weight or a spring can be fitted to mitigate pressure surges.

Product description:

Metal seated swing check valve with lever and weight. For drinking water and neutral liquids to max. 70°C

Standards:

- Designed according to EN 1074 - 3
- Face to face according to EN 558 Table 2 Basic Series 48
- Standard flange drilling to EN1092-2 (ISO 7005-2), PN 10/16

Test/Approvals:

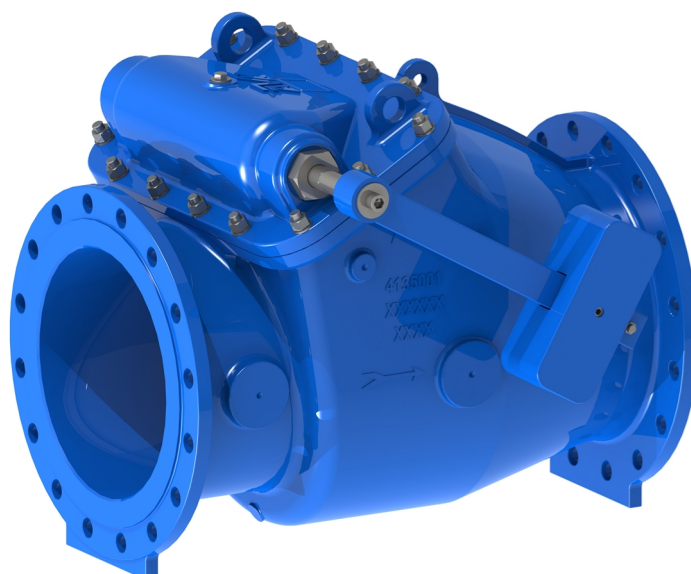
- Hydraulic test according to EN 1074-3/ EN12266
- Seat: 1.1×PN (in bar), Body: 1.5×PN (in bar).

Features:

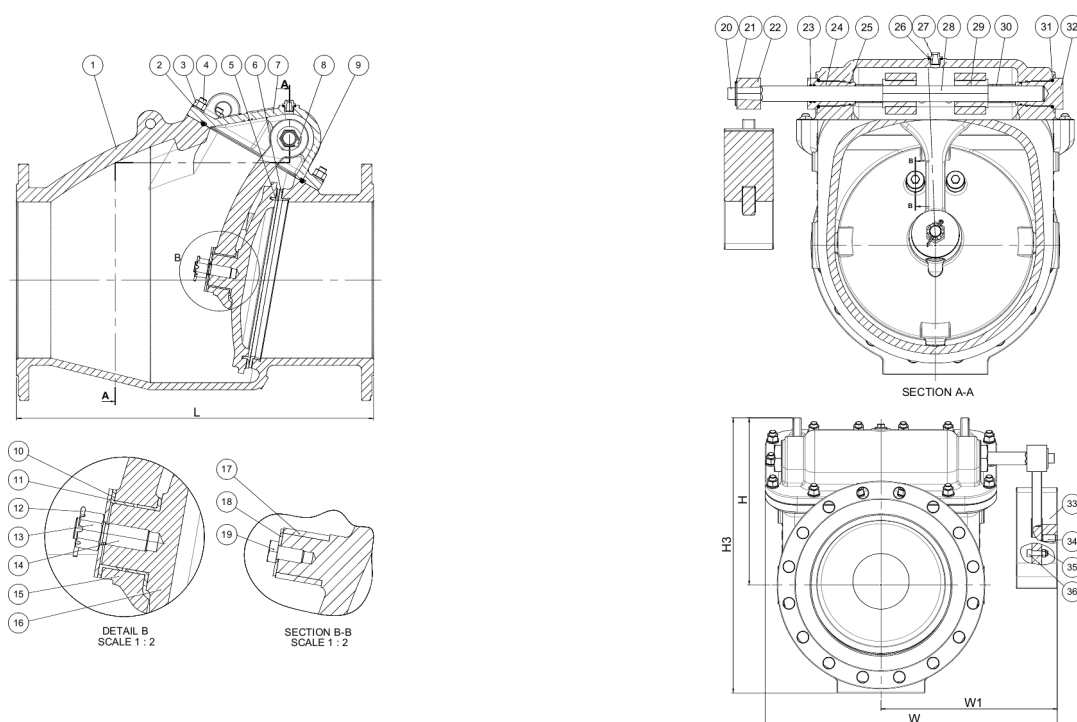
- Metal seat in high strength alu-bronze
- Shaft fitted in the bonnet allows for easy maintenance without removing valve from pipeline
- Shaft material 1.4404 (AISI 316L) stainless steel
- Position indicating lever with an adjustable weight that aids the disc in closing quickly to reduce water hammer
- Hinge of ductile iron coated with drinking water approved epoxy, firmly tightened around the shaft to eliminate play
- Bonnet gasket in a groove between bonnet and body to prevent blow-out
- All seals and coatings with contact to the fluid are approved for drinking water - coating is blue, 300µm fusion bonded epoxy
- Disc mounted in a flexible rubber bushing which allows it to tilt slightly in all directions and adjust exactly to the valve seat
- Bosses on each side of the valve seat allow for installation of pressure gauge, by-pass, etc.

Accessories:

Lever protection guard, combi-flanges, proximity switch, flange adaptors.



Expect... **AVK**

AVK SWING CHECK VALVE, METAL SEATED, PN 10/16**41/36-003****Right side lever and weight, 1.4404.shaft, A4 bolts, DN 350-600****Component list:**

1. Body	Ductile iron GJS-500-7 (GGG-50)	19. Bolt	Stainless steel A4
2. Washer	Stainless steel A4	20. Bolt	Stainless steel A4
3. Nut	Stainless steel A4	21. Washer	Stainless steel A4
4. Stud bolt	Stainless steel A4	22. Lever	Ductile iron GJS-500-7 (GGG-50)
5. Face ring	Alu-bronze CC331G (AB1)	23. O-ring	EPDM rubber
6. Seat ring	Alu-bronze CC331G (AB1)	24. Bushing, open	Brass, DZR CW602N (CZ132)
7. Bonnet	Ductile iron GJS-500-7 (GGG-50)	25. O-ring	EPDM rubber
8. Bolt	Stainless steel A4	26. Gasket	Polyamide
9. O-cord	EPDM rubber	27. Air plug	Stainless steel
10. Guide bush	EPDM rubber	28. Shaft	Stainless steel 1.4404 (316L)
11. Washer	Stainless steel A4	29. Connector	Stainless steel 1.4408
12. Split pin	Stainless steel A4	30. Spacer	Stainless steel 1.4401 (316)
13. Castle nut	Stainless steel A4	31. O-ring	EPDM rubber
14. Stud bolt	Stainless steel A4	32. Bushing	Brass, DZR CW602N (CZ132)
15. Hinge arm	Ductile iron GJS-500-7 (GGG-50)	33. Weight	Ductile iron GJS-500-7 (GGG-50)
16. Disc	Ductile iron GJS-500-7 (GGG-50)	34. Set screw	Stainless steel A4
17. Protective bush	EPDM rubber	35. Nut	Stainless steel A4
18. Washer	Stainless steel 1.4401 (316)	36. Bolt	Stainless steel A4

Components may be substituted with equivalent or higher class materials without prior notification.

Reference nos. and dimensions:

AVK ref. no.	DN	Flange	L	H	H3	W	W1	Theoretical weight / kg
	mm	drilling	mm	mm	mm	mm	mm	
41-350-36-0080106	350	PN10	800	419	689	731	441	339
41-350-36-0180106	350	PN16	800	419	689	731	441	339
41-400-36-0080106	400	PN10	900	470	765	801	476	447
41-400-36-0180106	400	PN16	900	470	765	801	476	447
41-450-36-0080106	450	PN10	1000	518	843	871	511	583
41-450-36-0180106	450	PN16	1000	518	843	871	511	583

The designs, materials and specifications shown are subject to change without notice due to the continuous development of our product programme.

AVK SWING CHECK VALVE, METAL SEATED, PN 10/16**41/36-003****Right side lever and weight, 1.4404.shaft, A4 bolts, DN 350-600****Reference nos. and dimensions:**

AVK ref. no.	DN mm	Flange drilling	L mm	H mm	H3 mm	W mm	W1 mm	Theoretical weight / kg
41-500-36-0080106	500	PN10	1100	570	935	931	541	812
41-500-36-0180106	500	PN16	1100	570	935	931	541	812
41-600-36-0080106	600	PN10	1300	630	1060	1045	598	1018
41-600-36-0180106	600	PN16	1300	630	1060	1045	598	1018