



## AVK SWING CHECK VALVE, METAL SEATED

41/36-004

Right hand side guarded lever and weight, PN16

AVK series 41 swing check valves come with both metal and resilient seats. Installed in pumping applications to prevent back flow they can be used for drinking water as well as waste water. The disc is connected to the shaft via a flexible bush that allows disc and valve seat to adjust exactly. All interior parts are stainless steel or coated with drinking water approved epoxy or EPDM. The series 41 valves are available with either closed bushings or protruding shaft end where a lever with a weight or a spring can be fitted to mitigate pressure surges.

### Product description:

Metal seated swing check valve with guard covering lever and weight for drinking water and neutral liquids to max. 70°C

### Design standards:

- EN 1074-3
- Face-to-face dimension according to EN 558 Table 2 Basic Series 48
- Flange drilling to EN1092, PN16

### Test/Approvals:

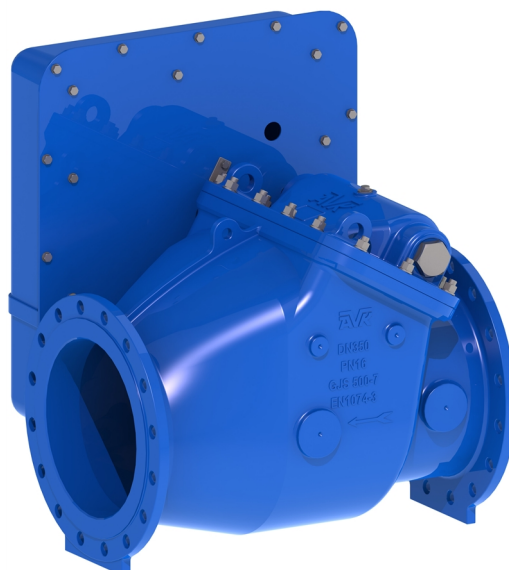
- Hydraulic test according to EN 1074-3/ EN12266
- Seat: 1.1×PN (in bar), Body: 1.5×PN (in bar).

### Features:

- Clear way and full bore for low head loss and easy pig-cleaning
- Metal seat in high strength alu-bronze
- Shaft in 1.4404 (AISI 316L) acid resistant stainless steel fitted in the bonnet allows for easy maintenance without removing valve from pipeline
- Position indicating lever with an adjustable weight that aids the disc in closing quickly to reduce water hammer, guard on lever mechanism
- Hinge of ductile iron coated with drinking water approved epoxy, firmly tightened around the shaft to eliminate play
- Bonnet gasket lying in a groove between bonnet and body prevents blow-out
- All seals and coatings with contact to the fluid are approved for drinking water - coating is blue, 300µm fusion bonded epoxy
- Disc mounted in a flexible rubber bushing which allows it to tilt slightly in all directions and adjust exactly to the valve seat
- Bosses on each side of the valve seat allow for installation of pressure gauge, by-pass, etc.

### Accessories:

Combi-flanges, proximity switch, flange adaptors.

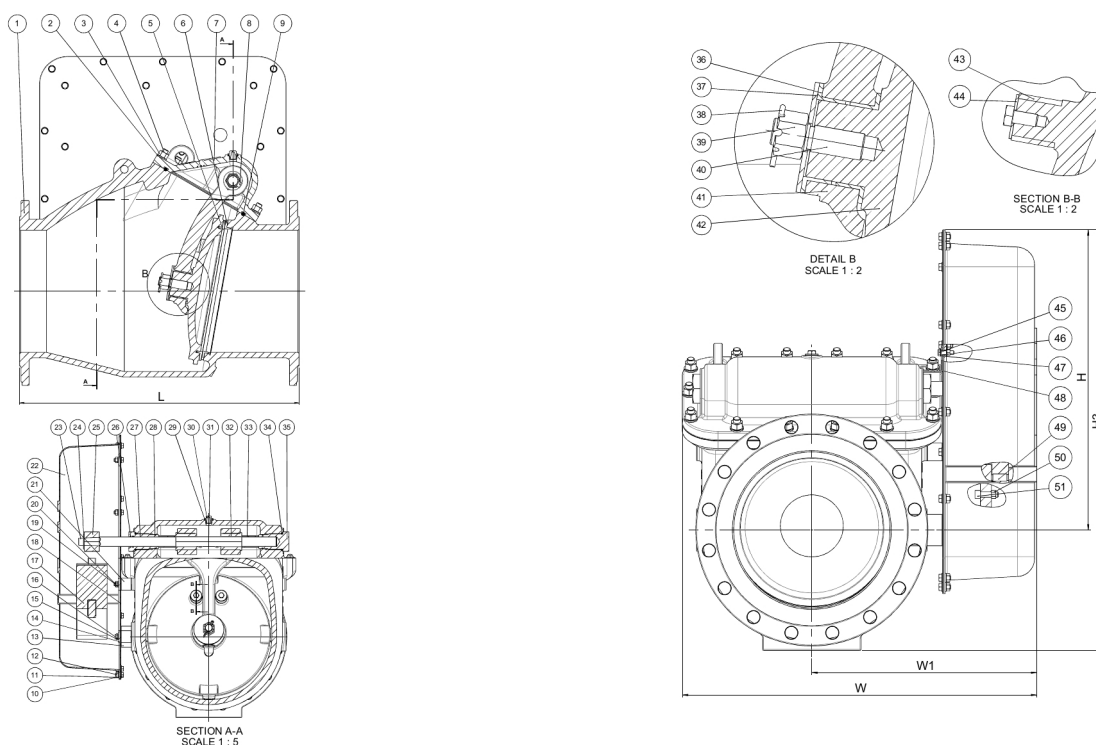


Expect... **AVK**

# AVK SWING CHECK VALVE, METAL SEATED

41/36-004

Right hand side guarded lever and weight, PN16



## Component list:

1. Body	Ductile iron GJS-500-7 (GGG-50)	27. Bushing, open	Brass DZR CW602N (CZ132)
2. Washer	Stainless steel A4	28. O-ring	EPDM rubber
3. Nut	Stainless steel A4	29. Gasket	Polyamide
4. Stud bolt	Stainless steel A4	30. Air plug	Stainless steel
5. Face ring	Alu-bronze CC331G (AB1)	31. Shaft	Stainless steel 1.4404 (316L)
6. Seat ring	Alu-bronze CC331G (AB1)	32. Connector	Stainless steel 1.4408, cast
7. Bonnet	Ductile iron GJS-500-7 (GGG-50)	33. Spacer	Stainless steel 1.4401 (316)
8. Bolt	Stainless steel A4	34. O-ring	EPDM rubber
9. O-cord	EPDM rubber	35. Bushing, closed	Brass DZR CW602N (CZ132)
10. Bolt	Stainless steel A4	36. Guide bush	EPDM rubber
11. Washer	Stainless steel A4	37. Washer	Stainless steel A4
12. Nut	Stainless steel A4	38. Split pin	Stainless steel A4
13. Spacer	Polyamide	39. Castle nut	Stainless steel A4
14. Guide bracket	Carbon steel	40. Stud bolt	Stainless steel A4
15. Bolt	Stainless steel A4	41. Hinge arm	Ductile iron GJS-500-7 (GGG-50)
16. Bolt	Stainless steel A4	42. Disc	Ductile iron GJS-500-7 (GGG-50)
17. Weight	Ductile iron GJS-500-7 (GGG-50)	43. Protective bush	EPDM rubber
18. Guard back plate	ABS plastic	44. Washer	Stainless steel 1.4401 (316)
19. Washer	Stainless steel A4	45. Bolt	Stainless steel A4
20. Bolt	Stainless steel A4	46. Nut	Stainless steel A4
21. Spacer washer	Polyamide	47. Washer	Stainless steel A4
22. Guard front plate	ABS plastic	48. Bracket	Stainless steel 316
23. Bolt	Stainless steel A4	49. Set screw	Stainless steel A4
24. Washer	Stainless steel A4	50. Nut	Stainless steel A4
25. Lever	Ductile iron GJS-500-7 (GGG-50)	51. Bolt	Stainless steel A4
26. O-ring	EPDM rubber		

The designs, materials and specifications shown are subject to change without notice due to the continuous development of our product range.

**AVK SWING CHECK VALVE, METAL SEATED****41/36-004****Right hand side guarded lever and weight, PN16**

Components may be substituted with equivalent or higher class materials without prior notification.

**Reference nos. and dimensions:**

AVK ref. no.	DN mm	Flange drilling	L mm	H mm	H3 mm	W mm	W1 mm	Theoretical weight/kg
41-350-36-0180166	350	PN16	800	756	1026	794	504	323
41-400-36-0180166	400	PN16	900	756	1051	864	539	434
41-450-36-0180166	450	PN16	1000	1004	1329	933	573	580
41-500-36-0180166	500	PN16	1100	1004	1369	996	606	772
41-600-36-0180166	600	PN16	1300	1004	1434	1110	663	1025