



AVK METAL SEATED SINGLE DOOR SWING CHECK VALVE

641/01

SS hinge pin, gunmetal seat, lever/weight/guard, bracket f. proxy sw., DN 700-1000, PN 16

001

AVK series 641 swing check valves are designed to automatically prevent flow reversal and serve as backflow preventers in potable water or backwater valves in waste water applications. The free shaft swing check valves are quick acting and require very little forward pressure to open. Optionally a lever with a weight can be fitted to the disc shaft.

Product Description:

Single door swing check valve for drinking water, waste water and neutral liquids to max. 70° C

Standards:

- Designed according to manufacturer's standard
- Standard flange drilling to EN1092-2 (ISO 7005-2), PN 16

Test/Approvals:

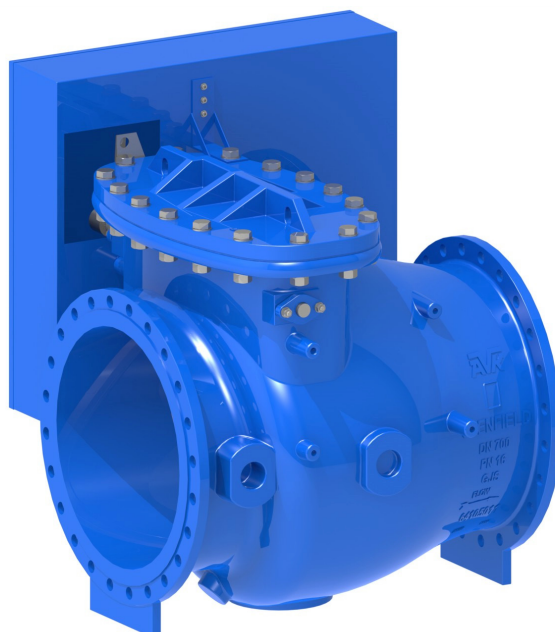
- Seat: 1.1 x PN. Body: 1.5 x PN.

Features:

- Metal seated
- Low forward pressure loss
- Suitable for both drinking water and waste water
- Fully automatic operation
- Removable cover on top of valve body to facilitate internal inspection of bearings and movement of door
- Bypass valve can be added to aid priming of pumps
- Lever and weight helps mitigate slamming
- Body, cover, lifter, disc and gland flange of ductile iron with two pack epoxy dark blue externally and light blue internally according to WRAS

Accessories:

Limit/proximity switch, by-pass, drain plug

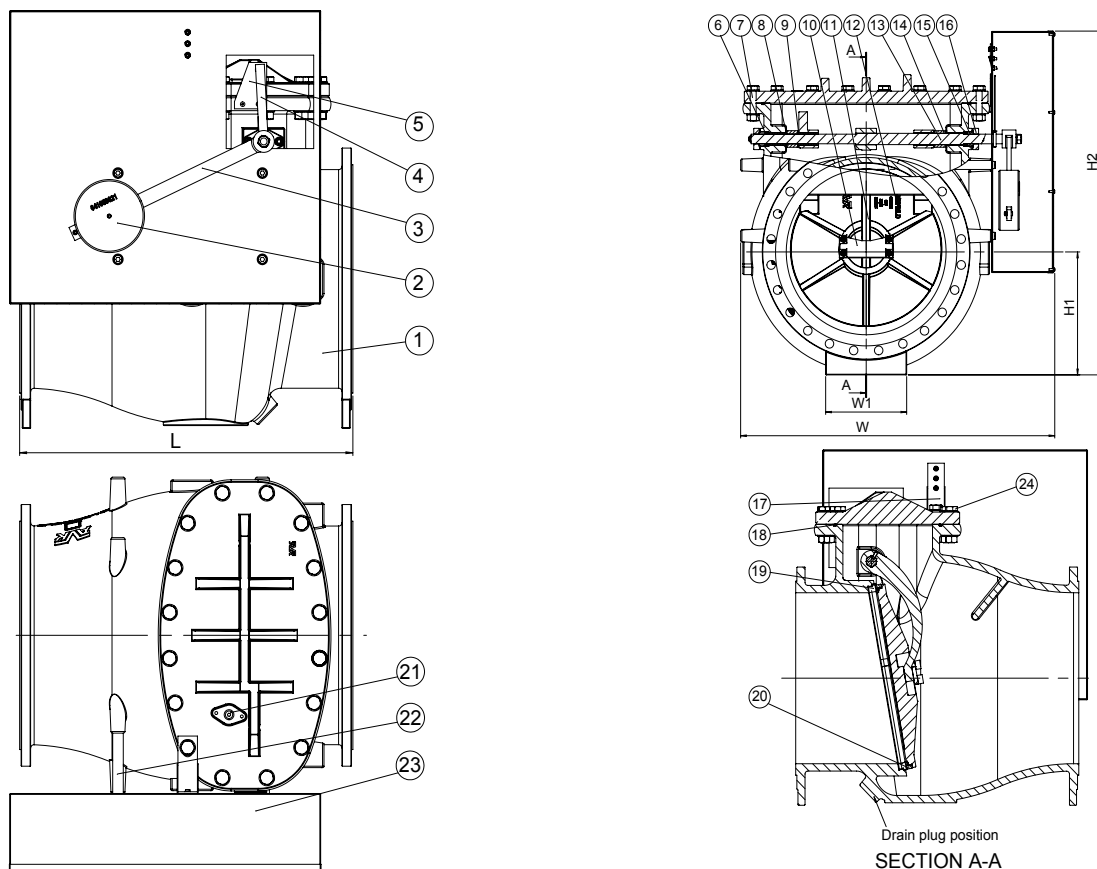


AVK METAL SEATED SINGLE DOOR SWING CHECK VALVE

641/01

SS hinge pin, gunmetal seat, lever/weight/guard, bracket f. proxy sw., DN 700-1000, PN 16

001



Component List:

1. Body	Ductile Iron GJS-500-7	2. Weight	Grey iron
3. Lever	Stainless steel, 1.4401	4. Tappet plate	Stainless steel, 1.4401
5. Switch mounting plate	Stainless steel, 1.4401	6. Packing	PTFE
7. Cover	Ductile Iron GJS-500-7	8. Bush on body	Alu-bronze CW307G
9. Bush on disc	Alu-bronze CW307G	10. Lifter plate	Stainless steel, 1.4401
11. Lifter	Ductile Iron GJS-500-7	12. Disc	Ductile Iron GJS-500-7
13. Shaft	Stainless steel, 1.4057	14. Collar	Alu-bronze CC331G
15. Gland	Alu-bronze CW307G	16. Gland flange	Ductile Iron GJS-500-7
17. Bracket for guard	Carbon steel	18. O-cord	EPDM, 70 Shore A
19. Seat ring	Bronze CC491K	20. Face ring	Bronze CC491K
21. Air plug	Stainless steel	22. Distance piece	Stainless steel, 1.4057
23. Guard	Carbon steel	24. Bolt	Galvanized 8.8

Components may be substituted with equivalent or higher class materials without prior notification.

Reference Nos. and Dimensions:

AVK ref. nos	DN mm	L mm	H1 mm	H2 mm	W mm	W1 mm	Theoretic. weight kg
641-0700-01-160008	700	1200	520	1454	1376	355	1647
641-0800-01-160008	800	1400	590	1582	1496	400	2289
641-0900-01-160008	900	1400	590	1582	1496	400	2332
641-1000-01-160008	1000	1750	725	1857	1750	400	3912