



## AVK RECOIL CHECK VALVE, PN25, SINGLE DOOR, SS HINGE PIN, HOT DIP GALVANIZED BOLTS

641/13-003

DN100-300, Alu-bronze seat

The recoil check valve is a high performance, fast acting, non-slam check valve used to prevent flow reversal. Mechanical assistance is given by a combination of inertia reduction, concentration of mass and ideal suspension of the moving elements. Hydraulic assistance is given by the provision for forward and backward water streams within the body and around the valve door.

### Product description:

Recoil check valve for drinking water and neutral liquids to max. 70°C

### Standards:

- Designed according to manufacturer's standard
- Face to face Length in accordance with Manufacturers Standard
- Standard flange drilling to EN1092-2 (ISO 7005-2), PN 25

### Test/Approvals:

- Seat: 1.1 x PN. Body: 1.5 x PN.

### Features:

- Fast acting closure response, it incorporates every mechanical and hydraulic assistance to aid quick valve closure
- Low reverse velocity characteristics
- Used on multi-pump systems and also single pump systems with high system deceleration gradients
- Inclined seating angle to reduce disc travel
- Integrally weight loaded door to accelerate movement
- No additional devices required to effect valve closure, it is practically maintenance free
- High reliability, it is designed based on extensive in-house laboratory research and proved by over 50 years of experience around the world
- Body, stopper, cover and door of ductile iron with fusion bonded epoxy dark blue externally and light blue internally according to WRAS

### Accessories:

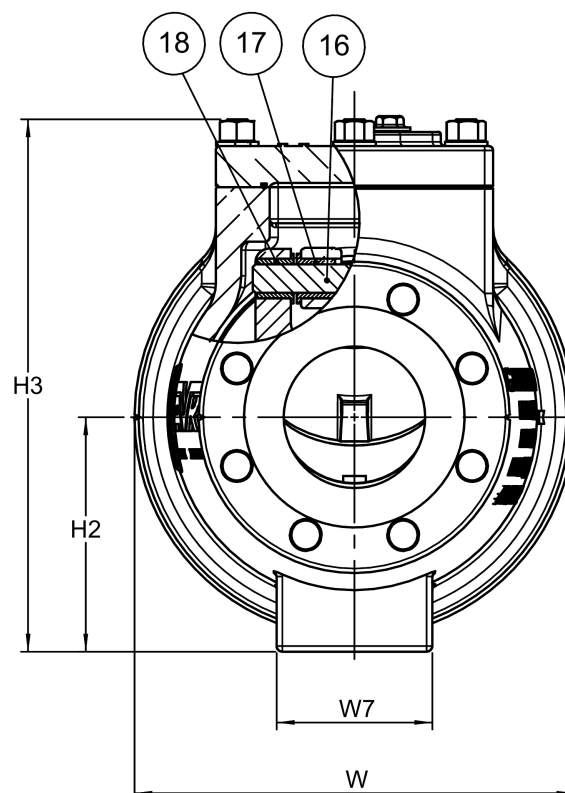
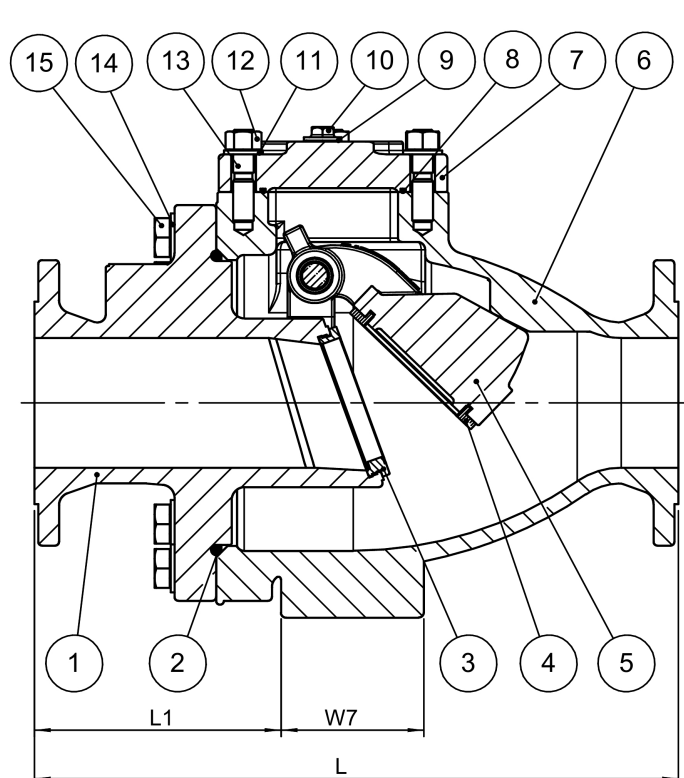
Limit/proximity switch.



Expect... **AVK**

**AVK RECOIL CHECK VALVE, PN25, SINGLE DOOR, SS HINGE PIN, HOT  
DIP GALVANIZED BOLTS**  
DN100-300, Alu-bronze seat

**641/13-003**



**Component list:**

1. Body inlet	Ductile iron GJS-500-7 (GGG-50)	10. Air plug	Stainless steel
2. O-cord	EPDM rubber	11. Washer	Steel, hot dip galvanized
3. Seat ring	Bronze CC331G (AB1)	12. Nut	Steel, hot dip galvanized
4. Face ring	Bronze CC331G (AB1)	13. Stud bolt	Steel, hot dip galvanized
5. Disc	Ductile iron GJS-500-7 (GGG-50)	14. Washer	Steel, hot dip galvanized
6. Body outlet	Ductile iron GJS-500-7 (GGG-50)	15. Screw	Steel, hot dip galvanized
7. Cover	Ductile iron GJS-500-7 (GGG-50)	16. Hinge pin	Stainless steel 1.4057
8. O-cord	EPDM rubber	17. Bush	Bronze CW307G
9. Gasket	Polyamide	18. Bush	Bronze CW307G

Components may be substituted with equivalent or higher class materials without prior notification.

**Reference nos. and dimensions:**

AVK ref. no.	DN	H2	H3	L	L1	W	W7	Theoretical weight / kg
	mm	mm	mm	mm	mm	mm	mm	
641-0100-13-700050	100	166	376	496	190	305	110	86
641-0150-13-700050	150	220	485	610	242	406	120	154
641-0200-13-700050	200	280	625	762	293	527	140	290
641-0250-13-700050	250	330	720	965	409	610	160	447
641-0300-13-700050	300	380	810	1067	455	673	200	612