



AVK DOUBLE ECCENTRIC BUTTERFLY VALVE, PN10/16

756/106-681

Integral seat, IP68 gearbox, plate disc, long, DN700-2800

AVK double eccentric butterfly valves are designed with tilted disc for easy operation. The disc seal is made of AVK's drinking water approved EPDM rubber featuring an excellent compression set and thus ability to regain its original shape. The high quality epoxy coating and fully encapsulated shaft/disc connection ensure high durability. The valves are suitable for bi-directional application. The DVGW/WRAS approved epoxy coating and fully encapsulated shaft/disc connection ensure high durability. The valves up to DN2400 are suitable for bi-directional application, DN2600 and above must be operated uni-directional.

Product description:

Double eccentric butterfly valve to EN 593 w. integral seat and IP68 gearbox for drinking water and neutral liquids to max. 70°C

Standards:

- Designed according to EN 593
- Face-to-face dimension according to EN 558 Table 2 Series 14 (DN≤2000)/DIN 3202 - F4 (DN>2000)
- Flange drilling to EN1092-2 (DN700-2000) / DIN2501(DN>2000 PN10 body) / special drilling (DN>2000 PN16 body)

Test/Approvals:

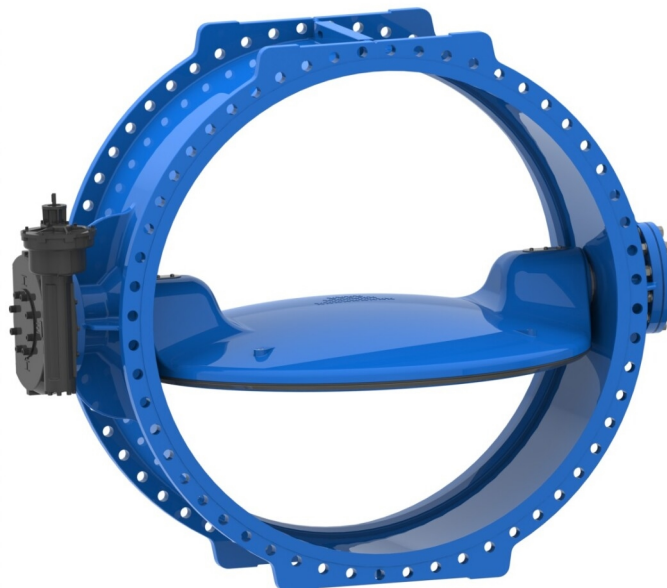
- Hydraulic test according to EN 1074-1 and 2 / EN 12266
- Approved for drinking water
- Approved according to KIWA Certificate K 6320 (DN 700-800 only)
- Approved according to DIN-DVGW Certificate NW-6201BR0451 (DN 700-1200 only)

Features:

- The tilted disc releases the compression of the disc sealing after a few degrees of opening resulting in low operating torque
- The disc seal profile and rubber quality ensure low closing torques
- All rubber parts are multi approved
- Seal retainer ring of stainless steel
- The threaded bolt holes in the disc are corrosion protected with O-rings
- Machined and epoxy coated ductile iron seat integrated in the body
- Shaft of stainless steel with self-lubricating bearings
- The shaft ends are fully encapsulated in the disc and are fixed with dowels corrosion protected with O-rings and a stainless steel security plate Key and keyway as backup
- Replaceable shaft sealing with two EPDM O-rings on each side of a bronze bushing, and a flat NBR gasket
- DN 700-1600, body and disc coated with fusion bonded epoxy coating in compliance with DIN 3476 part 1 and EN 14901, GSK approved, according to WRAS-DVGW/W270/UBA
- DN ≥ 1800, body and disc coated with 2-pack epoxy, blue RAL 5017 externally, ribbon blue or cream white internally, according to WRAS
- Bi-directional operation up to DN2400 and uni-directional from DN2600 and above

Accessories:

Dismantling joint and flange adaptor, handwheel from DN1800 PN16 and above



kiwa

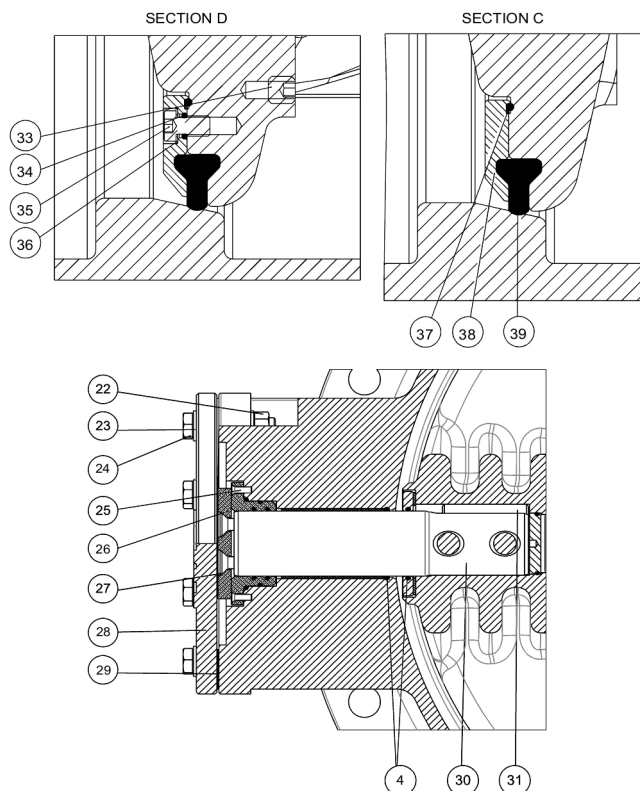
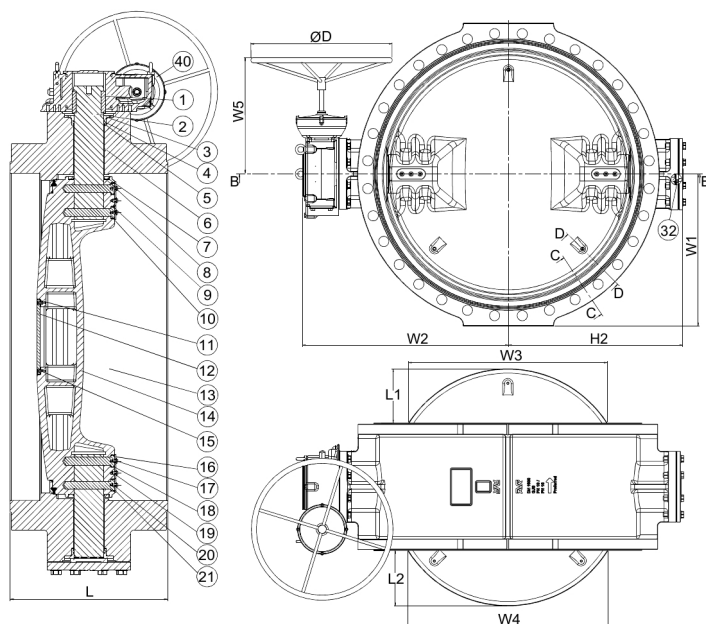
Expect... **AVK**

The designs, materials and specifications shown are subject to change without notice. This is due to the continuous development of our product programme.

AVK DOUBLE ECCENTRIC BUTTERFLY VALVE, PN10/16

756/106-681

Integral seat, IP68 gearbox, plate disc, long, DN700-2800



Component list:

1. Key	Stainless steel A2	21. Washer	Zinc
2. Valve shaft	Stainless steel 431	22. Nut	Stainless steel A2
3. Seal housing	Bronze	23. Washer	Stainless steel A2
4. O-ring	EPDM rubber	24. Screw	Stainless steel A2
5. O-ring	EPDM rubber	25. Screw	Stainless steel A2
6. Self-lubricating bearing	Bronze / PTFE composite	26. Thrust bearing	Bronze
7. Disc cover	Stainless steel	27. Screw	Stainless steel A2
8. Disc cover gasket	EPDM rubber	28. End plate	Ductile iron GJS-500-7 (GGG-50)
9. O-ring	EPDM rubber	29. Gasket	EPDM rubber
10. Dowel	Stainless steel A2	30. Stub shaft	Stainless steel 431
11. O-ring	EPDM rubber	31. Safety key	Stainless steel A2
12. Blanking flange ⁽¹⁾	Ductile iron GJS-500-7 (GGG-50)	32. Screw	Stainless steel A2
13. Body	Ductile iron GJS-500-7 (GGG-50)	33. Screw	Stainless steel A2
14. Disc	Ductile iron GJS-500-7 (GGG-50)	34. O-ring	EPDM rubber
15. Screw	Stainless steel A2	35. Bolt	Stainless steel A2
16. Security plate	Stainless steel	36. Washer	Stainless steel A2
17. Screw	Stainless steel A2	37. O-ring	EPDM rubber
18. O-ring	EPDM rubber	38. Seal retainer ring	Stainless steel
19. Spring washer	Stainless steel A2	39. Disc seal	EPDM rubber
20. O-ring	EPDM rubber	40. Gearbox	Cast iron

Components may be substituted with equivalent or higher class materials without prior notification.

The designs, materials and specifications shown are subject to change without notice. This is due to the continuous development of our product programme.

AVK DOUBLE ECCENTRIC BUTTERFLY VALVE, PN10/16**756/106-681****Integral seat, IP68 gearbox, plate disc, long, DN700-2800****Reference nos. and dimensions:**

AVK ref. no.	DN mm	Flange drilling	D mm	L mm	L1 mm	L2 mm	H2 mm	W1 mm	W2 mm	W3 mm	W4 mm	W5 mm	Theoretical weight/kg
756-0700-1-04006	700	PN10	600	430	127	133	550	448	641	533	543	396	444
756-0700-1-14006	700	PN16	700	430	127	133	550	455	641	533	543	517	517
756-0800-1-04006	800	PN10	600	470	156	162	620	508	711	627	636	396	592
756-0800-1-14006	800	PN16	700	470	156	162	620	513	711	627	636	517	663
756-0900-1-04006	900	PN10	700	510	186	192	690	558	791	722	730	517	745
756-0900-1-14006	900	PN16	700	510	186	192	690	563	791	722	730	570	874
756-1000-1-04006	1000	PN10	700	550	216	222	770	615	871	816	824	530	974
756-1000-1-14006	1000	PN16	600	550	216	222	770	628	871	816	824	570	1113
756-1200-1-04006	1200	PN10	600	630	269	275	855	728	956	986	993	570	1442
756-1200-1-14006	1200	PN16	700	630	269	275	855	743	956	986	993	590.5	1678
756-1400-1-04006	1400	PN10	700	710	333	339	970	838	1071	1182	1189	570	2150
756-1400-1-14006	1400	PN16	700	710	333	339	970	843	1119	1182	1189	590.5	2472
756-1500-1-04006	1500	PN10	700	750	363	369	1070	893	1171	1274	1281	570	2606
756-1500-1-14006	1500	PN16	700	750	363	369	1070	913	1219	1274	1281	590.5	3001
756-1600-1-04006	1600	PN10	700	790	390	396	1145	958	1294	1359	1366	590.5	3187
756-1600-1-14006	1600	PN16	700	790	390	396	1145	965	1294	1359	1366	630.5	3468
756-1800-1-04006	1800	PN10	700	870	448	454	1220	1058	1369	1540	1547	630.5	3794
756-1800-1-14006	1800	PN16	700	870	448	454	1220	1065	1398	1540	1547	721	4363
756-2000-1-04006	2000	PN10	700	950	521	527	1382	1180	1547	1753	1760	686	5327
756-2000-1-14006	2000	PN16	700	950	521	527	1382	1180	1560	1753	1760	747	6035
756-2200-1-04006	2200	PN10 DIN	700	1030	576	582	1472	1275	1650	1926	1932	721	6652
756-2200-1-14006	2200	PN16 DIN	600	1030	576	582	1482	1278	1657	1926	1932	810	8366
756-2400-1-04006	2400	PN10 DIN	700	1110	633	639	1613	1380	1759	2103	2109	752	9380
756-2400-1-14006	2400	PN16 DIN	700	1110	633	639	1584	1382	1753	2103	2109	764	11528
756-2600-1-04006 ⁽¹⁾	2600	PN10	600	1190	693	699	1820	1490	1980	2289	2295	826	11110
756-2600-1-14006 ⁽¹⁾	2600	PN16	400	1190	693	699	1855	1535	2050	2289	2295	780	14260
756-2800-1-04006 ⁽¹⁾	2800	PN10	600	1270	738	739	1921	1600	2080	2441	2442	780	12850

⁽¹⁾ Uni-directional