



## AVK DOUBLE ECC. BUTTERFLY VALVE, LONG, PN10/16

756/118-001

IP67 gearbox w. handwheel/pos. ind., SS-shaft, intgr. seat, A2 fasteners

AVK double eccentric butterfly valves with tilted disc are designed for easy operation and long service life. The disc seal is made of AVK's drinking water approved EPDM rubber featuring an excellent compression set and ability to regain the original shape. The high quality epoxy coating and fully encapsulated shaft/disc connection ensure optimal corrosion protection and durability

### Product description:

Double eccentric butterfly valve to EN 593 for neutral liquids like drinking water and treated waste water free from solids and fibrous impurities to max 70°C.

### Design standards:

- EN 593
- Face-to-face dimension according to EN 558 Table 2 Basic Series 14
- Flange drilling to EN1092, PN10/16

### Test/Approvals:

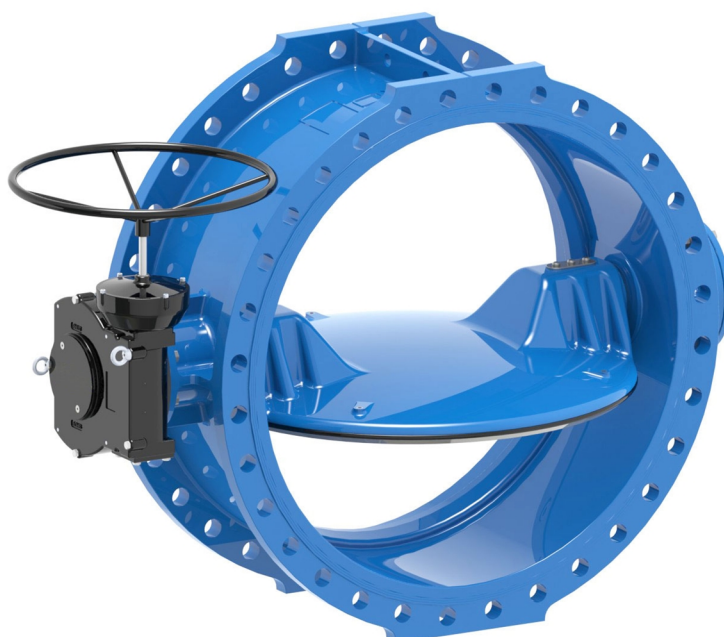
- Hydraulic test according to EN 1074-1 and 2 / EN 12266
- Approved according to KIWA Certificate K 6320 (DN ≤ 800 only)
- Approved according to DIN-DVGW Certificate NW-6201BR0451

### Features:

- Double eccentric design releases seal compression after only few degrees of opening resulting in low operating torque
- Disc firmly fixed to the shaft to prevent fluttering and a slight tilt allows for precise adjustment of the closed position
- Disc seal profile and rubber quality ensure low closing torque
- All rubber parts drinking water approved by multiple institutes
- Fasteners in stainless steel, A2
- Stainless steel shaft
- Machined and epoxy coated ductile iron seat integrated in the body
- All threaded connections are sealed with O-rings for protection against medium and environment
- Radial bearings in self-lubricating PTFE/bronze composite
- Shaft ends fully encapsulated in the disc and fixed with O-ring sealed dowels held in place with a security plate. Key and keyway as backup
- Replaceable shaft seals with two EPDM O-rings; gaskets to the exterior in hydrocarbon resistant NBR
- Coated with blue RAL 5017 FBE to DIN 3476, GSK and approved by WRAS-DVGW/W270/UBA, 250µm

### Accessories:

Extension spindle, street cover, dismantling joint, flange adaptor



**kiwa**

Expect... **AVK**

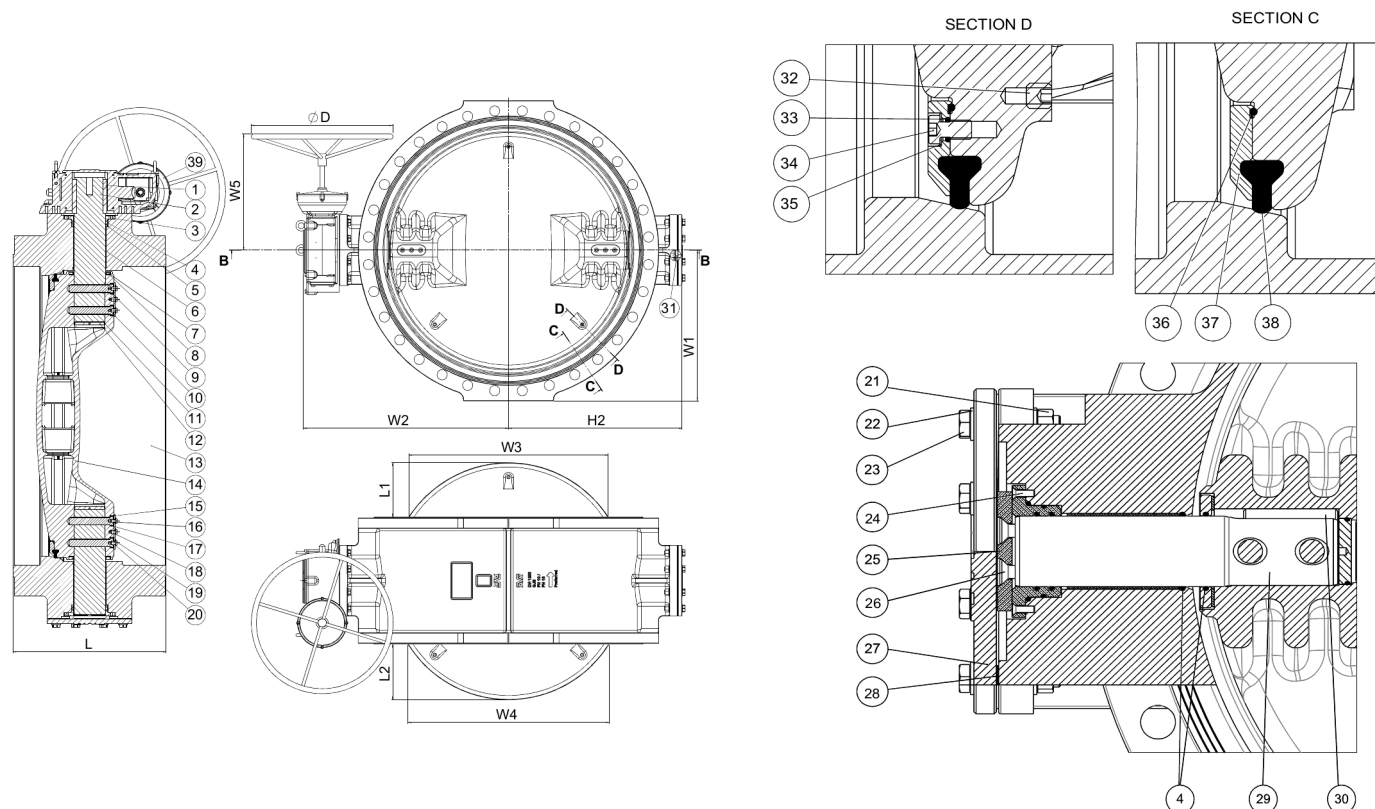
The designs, materials and specifications shown are subject to change without notice due to the continuous development of our product range.

©2022 AVK GROUP A/S

yupzon - 04-Oct-2022 08:12

**AVK DOUBLE ECC. BUTTERFLY VALVE, LONG, PN10/16**  
**IP67 gearbox w. handwheel/pos. ind., SS-shaft, intgr. seat, A2 fasteners**

**756/118-001**



**Component list:**

1. Key	Stainless steel A2	21. Nut	Stainless steel A2
2. Valve shaft	Stainless steel AISI 420	22. Washer	Stainless steel A2
3. Seal housing	Bronze	23. Screw	Stainless steel A2
4. O-ring	EPDM rubber	24. Screw	Stainless steel A2
5. O-ring	EPDM rubber	25. Thrust bearing	Bronze
6. Self-lubricating bearing	Bronze/PTFE composite	26. Screw	Stainless steel A2
7. Disc cover	Stainless steel	27. End plate	Ductile iron GJS-500-7 (GGG-50)
8. Disc cover gasket	EPDM rubber	28. Gasket	EPDM rubber
9. O-ring	EPDM rubber	29. Shaft, stub	Stainless steel AISI 420
10. Dowel	Stainless steel A2	30. Safety key	Stainless steel A2
11. O-ring	EPDM rubber	31. Screw	Stainless steel A2
12. Plug	Steel	32. Screw	Stainless steel A2
13. Body	Ductile iron GJS-500-7 (GGG-50)	33. O-ring	EPDM rubber
14. Disc	Ductile iron GJS-500-7 (GGG-50)	34. Bolt	Stainless steel A2
15. Security plate	Stainless steel	35. Washer	Stainless steel A2
16. Screw	Stainless steel A2	36. O-ring	EPDM rubber
17. O-ring	EPDM rubber	37. Seal retainer ring	Steel
18. Spring washer	Stainless steel A2	38. Disc seal	EPDM rubber
19. Washer	Zinc	39. Gearbox	Cast iron
20. O-ring	EPDM rubber		

Components may be substituted with equivalent or higher class materials without prior notification.

**Reference nos. and dimensions:**

AVK ref. no.	DN	Flange	D	L	L1	L2	H2	W1	W2	W3	W4	W5	Theoretical weight/kg
756-0700-1-04018014	700	PN10	600	430	127	133	550	448	641	533	543	457	444
756-0700-1-14018014	700	PN16	700	430	127	133	550	455	641	533	543	517	517

The designs, materials and specifications shown are subject to change without notice due to the continuous development of our product range.

**AVK DOUBLE ECC. BUTTERFLY VALVE, LONG, PN10/16**  
**IP67 gearbox w. handwheel/pos. ind., SS-shaft, intgr. seat, A2 fasteners**

**756/118-001**

**Reference nos. and dimensions:**

AVK ref. no.	DN	Flange	D	L	L1	L2	H2	W1	W2	W3	W4	W5	Theoretical
	mm	drilling	mm	mm	mm	mm	mm	mm	mm	mm	mm	mm	weight/kg
756-0800-1-04018014	800	PN10	600	470	156	162	620	508	711	627	636	457	592
756-0800-1-14018014	800	PN16	700	470	156	162	620	513	711	627	636	517	663
756-0900-1-04018014	900	PN10	700	510	186	192	690	558	791	722	730	517	745
756-0900-1-14018014	900	PN16	700	510	186	192	690	563	791	722	730	570	874
756-1000-1-04018014	1000	PN10	700	550	216	222	770	615	871	816	824	530	974
756-1000-1-14018014	1000	PN16	600	550	216	222	770	628	871	816	824	570	1113
756-1200-1-04018014	1200	PN10	600	630	269	275	855	728	956	986	993	570	1442
756-1200-1-14018014	1200	PN16	700	630	269	275	855	743	956	986	993	590.5	1678