



## AVK BLIND FLANGE

712/3810-001

PN 10/16

AVK's range of fittings comprises a wide selection of variants with socket and flange connection. The fittings are made of ductile iron GJS-500-7 and are epoxy coated according to DIN 30677-2 and GSK specifications - internally and externally.

### Product description:

Blind flange type X to EN 545 for water, waste water and neutral liquids to max. 70° C

### Design standards:

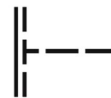
- EN 545
- Flange drilling to EN1092, PN10/16

### Test/Approvals:

- Approved according to ACS-France
- Belgaqua approved material

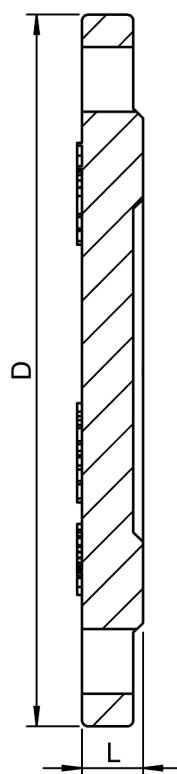
### Features:

- Ductile iron fitting to EN 545
- Body of GJS-500-7
- Epoxy coated to DIN 3476 and GSK internally and externally



Expect... **AVK**

The designs, materials and specifications shown are subject to change without notice due to the continuous development of our product range.


**Component list:**

1. Fitting	Ductile Iron
------------	--------------

Components may be substituted with equivalent or higher class materials without prior notification.

**Reference nos. and dimensions:**

AVK ref. no.	DN mm	Flange drilling	L mm	D mm	Theoretical weight/kg
712-0040-38-101	40	PN10/16	19	150	2.0
712-0050-38-101	50	PN10/16	19	165	2.4
712-0060-38-101	60	PN10/16	19	175	2.7
712-0060-38-103	60	PN10/16	19	175	3.0
712-0065-38-101	65	PN10/16	19	185	3.1
712-0070-38-101	60/65	PN10/16	19	185	3.0
712-0080-38-101	80	PN10/16	19	200	3.5
712-0100-38-101	100	PN10/16	19	220	4.3
712-0125-38-101	125	PN10/16	19	250	5.6
712-0150-38-101	150	PN10/16	19	285	7.2
712-0200-38-100	200	PN10	20	340	11
712-0200-38-101	200	PN16	20	340	11
712-0250-38-100	250	PN10	22	400	17
712-0250-38-101	250	PN16	22	400	17
712-0300-38-100	300	PN10	25	455	24
712-0300-38-101	300	PN16	25	455	24
712-0350-38-100	350	PN10	25	505	29
712-0350-38-101	350	PN16	27	520	34
712-0400-38-100	400	PN10	25	565	37
712-0400-38-101	400	PN16	28	580	45
712-0450-38-100	450	PN10	26	615	45
712-0450-38-101	450	PN16	30	640	59
712-0500-38-100	500	PN10	27	670	57
712-0500-38-101	500	PN16	32	715	78
712-0600-38-100	600	PN10	30	780	87
712-0600-38-101	600	PN16	36	840	124

The designs, materials and specifications shown are subject to change without notice due to the continuous development of our product range.

**AVK BLIND FLANGE****712/3810-001****PN 10/16****Reference nos. and dimensions:**

AVK ref. no.	DN mm	Flange drilling	L mm	D mm	Theoretical weight/kg
712-1200-38-100	1200	PN10	45	1455	470