



AVK BALL FLOAT VALVE, PN16

Stainless steel lever, stainless steel float

854/00-002

The AVK Series 854 are ball float valves designed to be fitted in the top of a tank or reservoir to automatically control the rate of filling and shut off completely when a predetermined level is reached. The balanced equilibrium design makes sure that operation is smooth and reliable.

Product description:

Balanced equilibrium float valve for water and other neutral liquids to max. 70°C. Maximum Working Pressure: 16 bar.

Design standards:

- Flange drilling to EN1092, PN16

Test/Approvals:

- Seat: 1.1 x PN. Body: 1.5 x PN.
- Belgaqua approved material

Features:

- Right angled design.
- Long actuating lever for slow closure.
- Flanged outlet for fitting of downpipe.
- Drop tight shut off.
- Fully removeable bronze cylinder.
- Easily maintained.
- Float in control of valve at all positions of travel.
- Face and piston seals easily replaceable.
- Float position adjustable in horizontal plane.

Accessories:

Vertical float rod arrangement

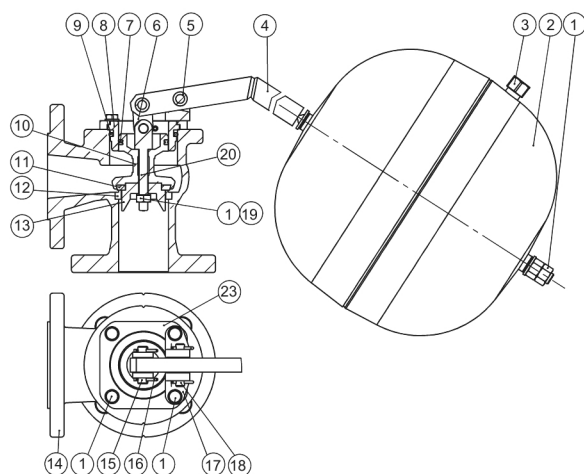


Expect... **AVK**

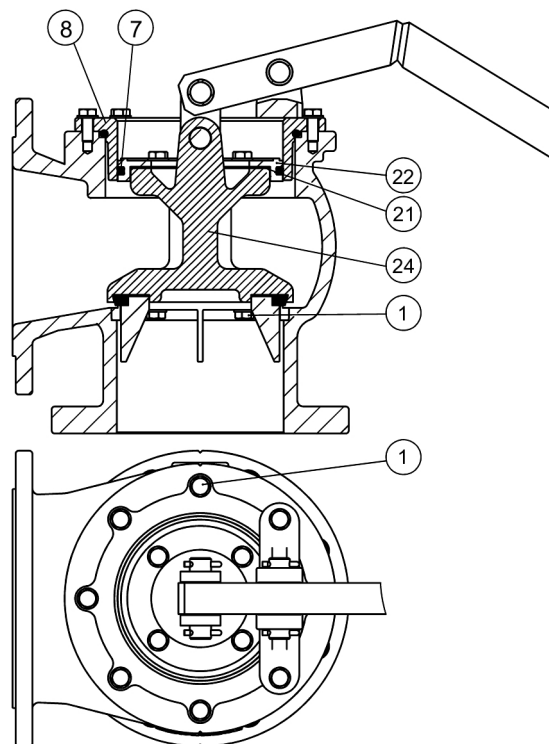
The designs, materials and specifications shown are subject to change without notice due to the continuous development of our product range.

AVK BALL FLOAT VALVE, PN16
Stainless steel lever, stainless steel float

854/00-002



DN50-100



DN150-300

Component list:

1. Bolt/nut	Stainless steel A2	13. Valve guide	Bronze CC499K
2. Float	Stainless steel 1.4401	14. Body	Ductile iron GJS-500-7
3. Filler cap	Stainless steel 1.4401	15. Hinge pin	Stainless steel 1.4301
4. Float lever	Stainless steel 1.4401	16. Split pin	Stainless steel A4
5. Bearing	Bronze	17. Fulcrum bracket	Ductile iron GJS-500-7
6. Link	Steel, hot dip galvanized	18. Fulcrum pin	Stainless steel 1.4301
7. Lip ring ⁽¹⁾	EPDM rubber	19. Washer	Stainless steel A4
8. Cylinder ⁽²⁾	Bronze CC499K	20. Piston bolt	Stainless steel 1.4305
9. O-ring	EPDM rubber	21. O-ring	EPDM rubber
10. Valve centre	Bronze CC499K	22. Valve piston	Bronze CC499K
11. Seal ring	EPDM rubber	23. Flange	Carbon steel
12. Seat ring	Bronze CC499K	24. Valve centre	Ductile iron GJS-500-7

Components may be substituted with equivalent or higher class materials without prior notification.

(1) DN250-300, O-ring

(2) DN50-100: Brass DZR 602N

Reference nos. and dimensions:

AVK ref. no.	DN	A	B	C	D	E	G	Max flow	Theoretical
	mm	mm	mm	mm	mm	mm	mm	l/sec	weight/kg
854-050-00-1311	50	110	110	700	260	170	150	6	21
854-080-00-1311	80	130	145	850	300	250	170	14	30
854-100-00-1311	100	140	160	1000	380	330	240	25	40
854-150-00-1311	150	180	210	1250	470	480	290	55	74
854-200-00-1311	200	220	270	1500	570	650	350	97	111
854-250-00-1311	250	250	330	1800	650	810	400	152	169
854-300-00-1311	300	300	380	2200	750	930	450	220	239

The designs, materials and specifications shown are subject to change without notice due to the continuous development of our product range.

