



SUBMERGED DISCHARGE VALVE, PN 16

856/1-001

Bare shaft

The AVK submerged discharge valves are designed to safely dissipate the surplus energy from large amounts of rapidly flowing water. Installed at the outlet of dams or reservoirs and discharging sub-surface into a stilling basin, they operate with a minimum of noise and a maximum of safety.

Product description:

Submerged discharge valve for dam and reservoir fresh water.

Design standards:

- Flange drilling to EN1092, PN16

Test/Approvals:

- Test according to EN 12266-1, Leakage Rate A

Features:

- Terminal discharge valves situated at the end of the pipeline and are installed in a compact stilling sump
- Stilling sump providing submerged discharge with safe and quiet energy dissipation
- Hydraulic balance, no differential loads, low operating effort, small actuator
- Resilient seal for drop-tight shut off
- Submerged discharge, safe, quiet energy dissipation and cavitation free
- Chloride resistant stainless steel internal parts, bronze ported body with epoxy coated ductile iron components for high corrosion resistance
- Shaped multi-ports giving wide control range, can be customized for specified condition
- External mechanism allowing easy maintenance and visible indication
- Fine screw thread for slow speed operation and fine adjustment, good positioning and gradual flow change

Accessories:

Electric Actuator, Gearbox and handwheel

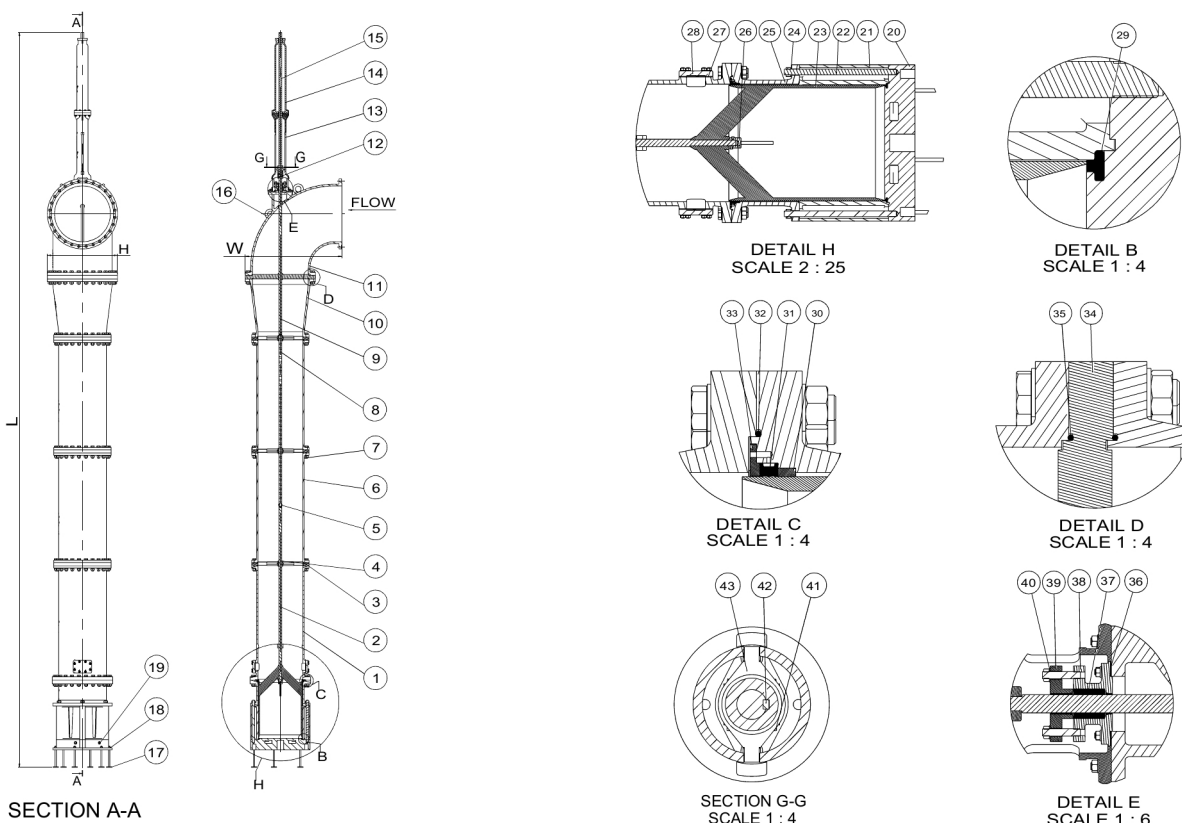


Expect... **AVK**

SUBMERGED DISCHARGE VALVE, PN 16

856/1-001

Bare shaft



Component list:

| | | | |
|-------------------------|---------------------------------|----------------------|---------------------------------|
| 1. Stopper pipe | Ductile iron GJS-500-7 (GGG-50) | 23. Sleeve | Stainless steel 1.4401 |
| 2. Bottom valve spindle | Stainless steel 1.4057 | 24. Washer | Stainless steel A4-70 |
| 3. Guide spider | Ductile iron GJS-500-7 (GGG-50) | 25. Upper valve body | Ductile iron GJS-500-7 (GGG-50) |
| 4. Bush | Alu-bronze CW307G | 26. Lifting nut | Stainless steel 1.4057 |
| 5. Screw | Stainless steel A4-70 | 27. Gasket | EPDM rubber |
| 6. Extension pipe | Ductile iron GJS-500-7 (GGG-50) | 28. Handhole cover | Ductile iron GJS-500-7 (GGG-50) |
| 7. Bolt | Stainless steel A4-70 | 29. Face ring | Neoprene |
| 8. Intermediate spindle | Stainless steel 1.4057 | 30. Guide ring | Bronze |
| 9. Upper valve spindle | Stainless steel 1.4057 | 31. Seal ring | Neoprene |
| 10. Taper pipe | Ductile iron GJS-500-7 (GGG-50) | 32. O-ring | EPDM rubber |
| 11. Inlet bend | Ductile iron GJS-500-7 (GGG-50) | 33. Gland ring | Bronze |
| 12. Coupling | Ductile iron GJS-500-7 (GGG-50) | 34. Guide spider | Ductile iron GJS-500-7 (GGG-50) |
| 13. Stool | Ductile iron GJS-500-7 (GGG-50) | 35. O-ring | EPDM rubber |
| 14. Upper pillar | Ductile iron GJS-500-7 (GGG-50) | 36. Gasket | EPDM rubber |
| 15. Spindle | Stainless steel 1.4057 | 37. Packing | PTFE |
| 16. Eye bolt | Steel, hot dip galvanized | 38. Stuffing box | Ductile iron GJS-500-7 (GGG-50) |
| 17. Foundation bolt | Stainless steel 1.4401 | 39. Gland | Ductile iron GJS-500-7 (GGG-50) |
| 18. Spring washer | Stainless steel A4-70 | 40. Washer | Stainless steel 1.4401 |
| 19. Plug | Bronze | 41. Hex nut | Stainless steel A4-70 |
| 20. Baseplate | Ductile iron GJS-500-7 (GGG-50) | 42. Key | Stainless steel A4-70 |
| 21. Ported body | Alu-bronze CC333G | 43. Torque plate | Stainless steel 1.4401 |
| 22. Stay bar | Stainless steel 1.4057 | | |

Components may be substituted with equivalent or higher class materials without prior notification.

The designs, materials and specifications shown are subject to change without notice due to the continuous development of our product range.

SUBMERGED DISCHARGE VALVE, PN 16**856/1-001****Bare shaft****Reference nos. and dimensions:**

| AVK ref. no. | DN/DN | Flange drilling | H mm | W mm | L mm | Theoretical weight/kg |
|-------------------------|-------------|--------------------|---------|---------|---------|--------------------------|
| 856-0200-0-110000000100 | 200 - 200 | PN16 | 515 | 563 | 4760 | 1000 |
| 856-0300-0-110020020200 | 300 - 300 | PN16 | 460 | 660 | 8150 | 1500 |
| 856-0300-1-110010010100 | 300 - 250 | PN16 | 460 | 660 | 8150 | 1300 |
| 856-0400-2-110090090100 | 400 - 250 | PN16 | 580 | 790 | 6991 | 1481 |
| 856-0450-1-110030030200 | 450 - 400 | PN16 | 714 | 853 | 6894 | 3000 |
| 856-0600-2-110040040100 | 600 - 450 | PN16 | 840 | 1120 | 8250 | 5000 |
| 856-0800-1-100050050200 | 800 - 600 | PN10 | 1025 | 1214.5 | 11480 | 7000 |
| 856-1000-2-110060060200 | 1000 - 800 | PN16 | 1255 | 1727.5 | 12840 | 12500 |
| 856-1400-1-110070070300 | 1400 - 1200 | PN16 | 1685 | 2122.5 | 16150 | 20000 |
| 856-1600-2-110080080000 | 1600 - 1200 | PN16 | 1930 | 2222 | 16500 | 21000 |