



AVK FIXED CONE DISCHARGE VALVE

857/0

Shaft and lever operated, PN 16, DN 200-300

001

The AVK fixed cone (Howell-Bunger) discharge valves are designed to safely dissipate the surplus energy from large amounts of rapidly flowing water. Installed at the outlet of dams or reservoirs and discharging directly into the atmosphere, they operate safely minimizing erosion or other damage to the surroundings.

Product Description:

Fixed cone crank-lever-sleeve operated discharge valve for drinking water and neutral liquids to max. 70°C

Standards:

- Standard flange drilling to EN1092-2 (ISO 7005-2), PN 16

Test/Approvals:

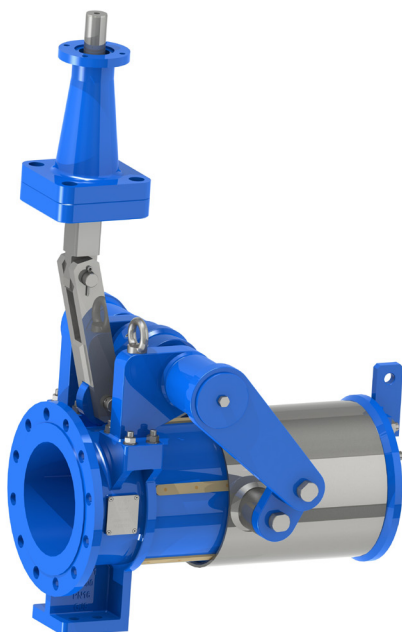
- Test according to EN 12266-1, Leakage Rate A

Features:

- End of line installation, for high volume dam or reservoir discharge
- Hydraulic balance, no differential loads, low operating effort, small actuator
- Resilient seal for drop-tight shut off
- Effective dissipation of the flowing water kinetic energy before it strikes any boundary surface, minimum wear/erosion, no cavitation risk
- Acid proof stainless steel sleeve with epoxy coated ductile iron components for high corrosion resistance
- Single piece casted body for rigidity and strength, downstream end is formed as an inverted cone for dissipation of water energy
- Profile sealing ring replaceable without disassembling the valve from the pipeline
- Fine screw thread for slow speed operation and fine adjustment, good positioning and gradual flow change

Accessories:

Electric Actuator, Gearbox and handwheel



Glenfield

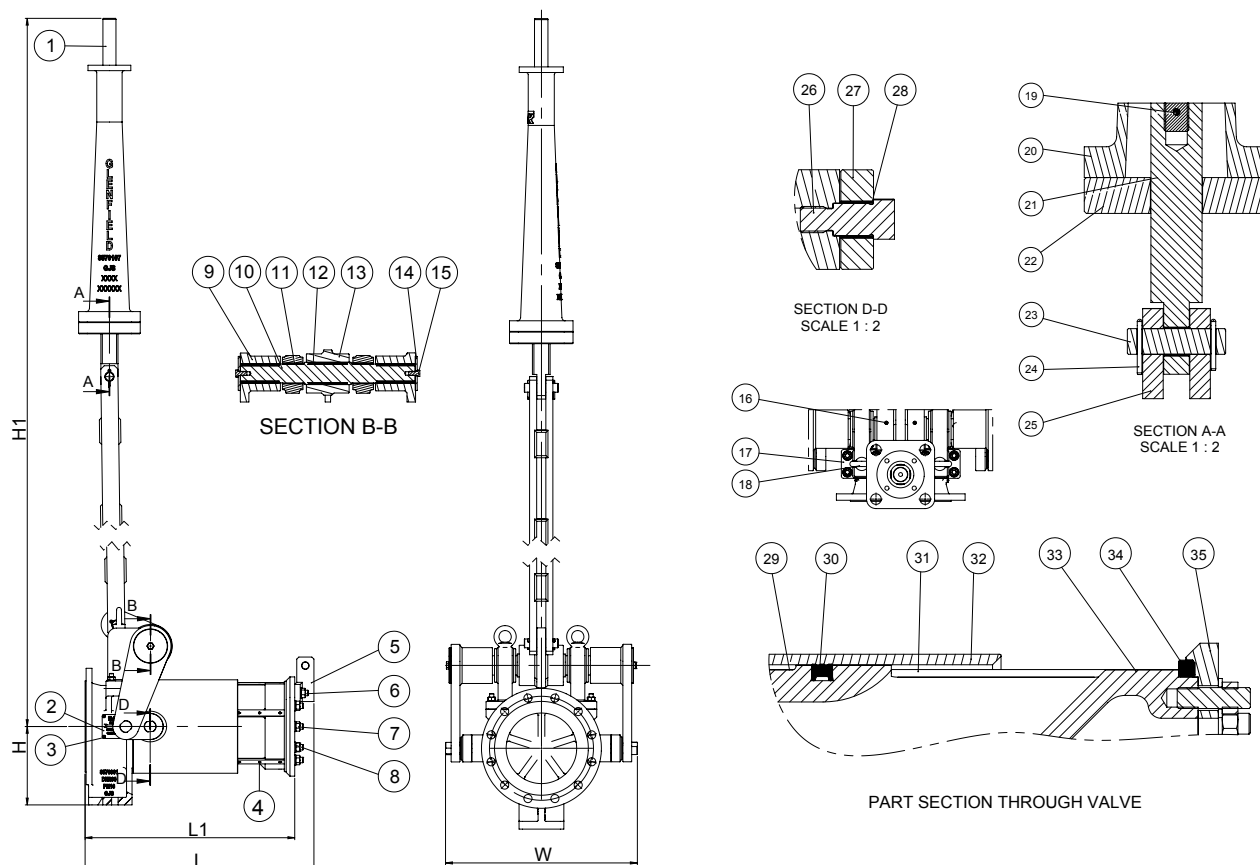
Member of the **AVK** Group

AVK FIXED CONE DISCHARGE VALVE

Shaft and lever operated, PN 16, DN 200-300

857/0

001



Component List:

1. Spindle	Stainless steel, 1.4401	2. Plate	Stainless steel, 1.4401
3. Bolt	Stainless steel, Grade A4	4. Pin rivet	Phosphor Bronze PB102
5. Lift bracket	Stainless steel, 1.4401	6. Stud	Grade A4-70
7. Nut	Grade A4-70	8. Washer	Stainless steel, 1.4401
9. Side lever	Stainless steel, 1.4401	10. Fulcrum shaft	Stainless steel, 1.4401
11. Bearing	Bronze-PTFE composite	12. Key	Stainless steel, 1.4057
13. Fulcrum lever	Stainless steel, 1.4401	14. End plate	Stainless steel, 1.4401
15. Bolt	Grade A4-70	16. Screw	Grade A4-70
17. Fulcrum bracket	Stainless steel, 1.4401	18. Eyebolt	Hot dip galvanized
19. Locking pin	Stainless steel, 1.4057	20. Pillar	Ductile Iron GJS-500-7
21. Guide spindle	Stainless steel, 1.4401	22. Guide plate	Stainless steel, 1.4401
23. Hinge pin	Stainless steel, 1.4057	24. Split pin	Grade A4-70
25. Connection rod	Stainless steel, 1.4401	26. Link pin	Stainless steel, 1.4057
27. Link	Stainless steel, 1.4401	28. Bearing	Bronze-PTFE composite
29. Guide strip downstream	Al-bronze CW307G	30. Sealing strip	Neoprene
31. Guide strip upstream	Al-bronze CW307G	32. Sleeve	Stainless steel, 1.4401
33. Body	Ductile Iron GJS-500-7	34. Face ring	NBR, 70 Shore
35. Retaining ring	Ductile Iron GJS-500-7		

Components may be substituted with equivalent or higher class materials without prior notification.

Reference Nos. and Dimensions:

The designs, materials and specifications shown are subject to change without notice. This is due to the continuous development of our product programme.

AVK ref. nos	DN mm	Flange drilling	L1 mm	L mm	H mm	H1 mm	W mm	Theoretic. weight kg
857-0200-0-1010000	200	PN16	613	668.5	229	2923	544	500
857-0300-0-1010000	300	PN16	763	819	273	3409	640	800