



AVK NEEDLE VALVE, PN10/16

872/00-001

DI/SS body, SS internals, A2 bolts, gearbox for ON/OFF

AVK series 872 needle valves are designed for throttling and control of pressure and flow at high flow rates and high differential pressures. The focus is on durability and reliability with the sturdy valve housing made of either stainless steel or ductile iron coated with fusion bonded epoxy. It controls with high precision and the high quality materials guarantee long service life with easy maintenance access.

Product description:

Needle valve for manual or intermittent pressure or flow control of water to max. 70°C

Design standards:

- EN 1074-5
- Face-to-face dimension according to EN 558 Table 2 Basic Series 15
- Flange drilling to EN1092, PN10/16

Test/Approvals:

- Hydraulic test according to EN 1074-1 and 5/ EN12266
- ISO 9001 certified - SAI Global Quality
- ISO 14001 certified - SAI Global Environment

Features:

- One-piece body construction
- Symmetrical flow path ensures evenly distributed flow around the entire seat in any open position
- Pressure balance in chamber inside for low operating torque
- Internal body shape is optimized to give low head loss coefficient
- 4 - 6 guide rails ensure very low vibration
- Main seal mounted on the piston as opposed to on the seat preventing abrasion when fitted with anti-cavitation trim
- Bushings in high strength alu-bronze
- Gaskets in polyurethane for high resistance to abrasion
- Gearbox for manual or intermittent operation
- Internal parts and fasteners in stainless steel
- All iron parts coated with min. 250µm, blue RAL5005 epoxy - fusion bonded (FBE) for DN200-1000, 2-pack for DN1200 and larger
- DN80-150 bodies in uncoated stainless steel
- Double O-rings sealed drive shaft
- Easy access for maintenance
- Functions: Flow control, Pressure regulation, Pump start, Reservoir inlets, Discharge, Turbine by-pass, Air regulation

Accessories:

Handwheel for gearbox, actuator, anti-cavitation trim options



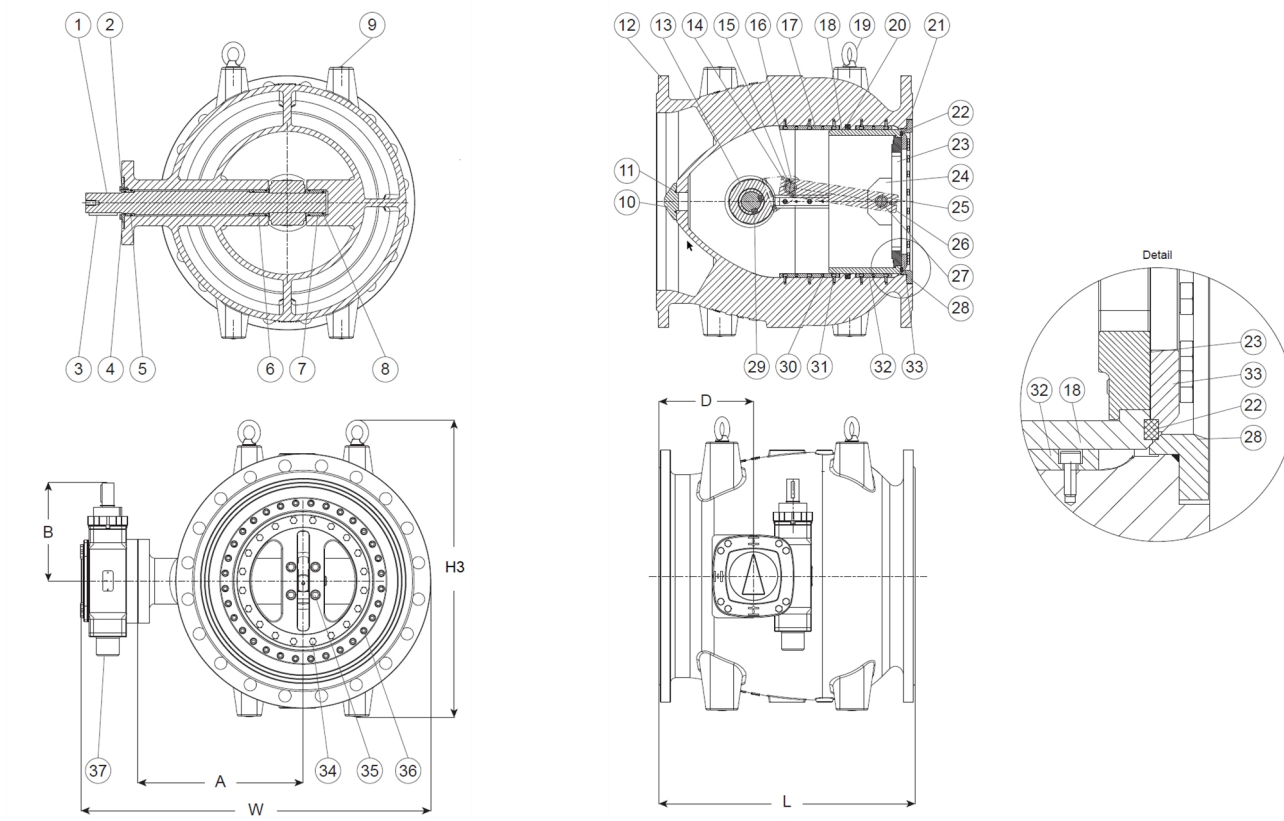
Expect... **AVK**

The designs, materials and specifications shown are subject to change without notice due to the continuous development of our product range.

AVK NEEDLE VALVE, PN10/16

872/00-001

DI/SS body, SS internals, A2 bolts, gearbox for ON/OFF



Component list:

1. Shaft	Stainless steel 1.4028	20. Gasket	Polyurethane
2. Screw	Stainless steel A2-70	21. O-ring	EPDM rubber
3. Key	Stainless steel	22. Gasket	Polyurethane
4. Ring cap	Alu-bronze CC333G	23. Piston flange	Stainless steel 1.4301
5. O-ring	EPDM rubber	24. Fixing plate	Stainless steel 1.4301
6. Bush	Alu-bronze CC333G	25. Bush	Alu-bronze CC333G
7. Bush	Alu-bronze CC333G	26. Connection rod	Stainless steel 1.4028
8. O-ring	EPDM rubber	27. Pin	Stainless steel 1.4028
9. Plug	Plastic	28. Body seal ring	Stainless steel 1.4301
10. Ogive	Stainless steel 1.4028	29. Key	Stainless steel
11. O-ring	EPDM rubber	30. Socket screw	Stainless steel A2-70
12. Body ⁽¹⁾	Ductile iron GJS-500-7 (GGG-50)	31. Bolt, socket head	Stainless steel A2-70
13. Crank ⁽²⁾	Ductile iron GJS-500-7 (GGG-50)	32. Guide ⁽³⁾	Brass CW617N
14. Pin	Stainless steel 1.4028	33. Fixing gasket ring	Stainless steel 1.4301
15. Split pin	Stainless steel 1.4301	34. Bolt, hexagon head	Stainless steel A2-70
16. Bush	Alu-bronze CC333G	35. Bolt, socket head	Stainless steel A2-70
17. Guide ⁽³⁾	Brass CW617N	36. Bolt, socket head	Stainless steel A2-70
18. Piston tube	Stainless steel 1.4301	37. Gearbox	
19. Eye bolt	Steel, zinc coated		

Components may be substituted with equivalent or higher class materials without prior notification.

(1) DN 80, 100 and 150: cast stainless steel 1.4308 / CF8

(2) DN 80, 100 and 150: stainless steel 1.4401 / 316

(3) DN 80, 100 and 150: cast stainless steel 1.4308 / CF8 as part of the body

The designs, materials and specifications shown are subject to change without notice due to the continuous development of our product range.

AVK NEEDLE VALVE, PN10/16**872/00-001****DI/SS body, SS internals, A2 bolts, gearbox for ON/OFF****Reference nos. and dimensions:**

AVK ref. no.	DN mm	Flange drilling	A mm	B mm	D mm	H3 mm	L mm	W mm	Theoretical weight/kg
872-0080-00-10900100100 ⁽¹⁾	80	PN10/16	125	117	100	230	260	330	31
872-0100-00-10900100100	100	PN10/16	145	117	120	230	300	360	39
872-0150-00-10900100100	150	PN10/16	175	150	135	295	350	425	69
872-0200-00-00100100000	200	PN10	220	150	150	425	400	500	102
872-0200-00-10100100000	200	PN16	220	150	150	425	400	500	102
872-0250-00-00100100000	250	PN10	260	150	165	475	450	565	152
872-0250-00-10100100000	250	PN16	260	150	165	475	450	570	153
872-0300-00-00100100000	300	PN10	305	155	185	535	500	655	219
872-0300-00-10100100000	300	PN16	305	155	185	535	500	655	222
872-0350-00-00100100000	350	PN10	345	170	205	595	550	720	270
872-0350-00-10100100000	350	PN16	345	170	205	595	550	725	285
872-0400-00-00100100000	400	PN10	385	300	235	660	600	825	353
872-0400-00-10100100000	400	PN16	385	300	235	660	600	825	367
872-0450-00-00100100000	450	PN10	415	300	240	745	650	875	431
872-0450-00-10100100000	450	PN16	415	300	240	745	650	885	452
872-0500-00-00100100000	500	PN10	445	300	245	785	700	935	521
872-0500-00-10100100000	500	PN16	445	300	245	785	700	950	554
872-0600-00-00100100000	600	PN10	505	300	280	925	800	1060	762
872-0600-00-10100100000	600	PN16	505	300	280	925	800	1070	826
872-0700-00-00100100000	700	PN10	565	305	315	1045	900	1185	1080
872-0700-00-10100100000	700	PN16	565	305	315	1045	900	1185	1097
872-0800-00-00100100000	800	PN10	650	305	350	1180	1000	1335	1564
872-0800-00-10100100000	800	PN16	650	335	350	1180	1000	1335	1597
872-0900-00-00100100000	900	PN10	715	335	385	1320	1100	1440	2025
872-0900-00-10100100000	900	PN16	715	335	385	1320	1100	1440	2068
872-1000-00-00100100000	1000	PN10	760	510	400	1490	1200	1590	2554
872-1000-00-10100100000	1000	PN16	760	510	400	1490	1200	1590	2617
872-1200-00-00100100000	1200	PN10	870	510	415	1710	1400	1810	3768
872-1200-00-10100100000	1200	PN16	870	510	415	1710	1400	1810	3872
872-1400-00-00100100000	1400	PN10	1000	510	480	1960	1600	2100	5267
872-1400-00-10100100000	1400	PN16	1000	610	480	1960	1600	2100	5560
872-1600-00-00100100000	1600	PN10	1153	610	625	2230	1800	2440	8158
872-1600-00-10100100000	1600	PN16	1153	741	625	2230	1800	2440	8321

(1) Face to face according to EN 558, ser. 48

