



AVK NEEDLE VALVE, PN25

872/00-002

DI/SS body, SS internals, A2 bolts, gearbox for ON/OFF

AVK series 872 needle valves are designed for throttling and control of pressure and flow at high flow rates and high differential pressures. The focus is on durability and reliability with the sturdy valve housing made of either stainless steel or ductile iron coated with fusion bonded epoxy. It controls with high precision and the high quality materials guarantee long service life with easy maintenance access.

Product description:

Needle valve for manual or intermittent pressure or flow control of water to max. 70°C

Design standards:

- EN 1074-5
- Face-to-face dimension according to EN 558 Table 2 Basic Series 15
- Flange drilling EN1092, PN25

Test/Approvals:

- Hydraulic test according to EN 1074-1 and 5/ EN12266
- ISO 9001 certified - SAI Global Quality
- ISO 14001 certified - SAI Global Environment

Features:

- One-piece body construction
- Symmetrical flow path ensures evenly distributed flow around the entire seat in any open position
- Pressure balance in chamber inside for low operating torque
- Internal body shape is optimized to give low head loss coefficient
- 4 - 6 guide rails ensure very low vibration
- Main seal mounted on the piston as opposed to on the seat preventing abrasion when fitted with anti-cavitation trim
- Bushings in high strength alu-bronze
- Gaskets in polyurethane for high resistance to abrasion
- Gearbox for manual or intermittent operation
- Internal parts and fasteners in stainless steel
- All iron parts coated with min. 250µm, blue RAL5005 epoxy - fusion bonded (FBE)
- DN80-150 bodies in uncoated stainless steel
- Double O-rings sealed drive shaft
- Easy access for maintenance
- Functions: Flow control, Pressure regulation, Pump start, Reservoir inlets, Discharge, Turbine by-pass, Air regulation

Accessories:

Handwheel for gearbox, actuator, anti-cavitation trim options



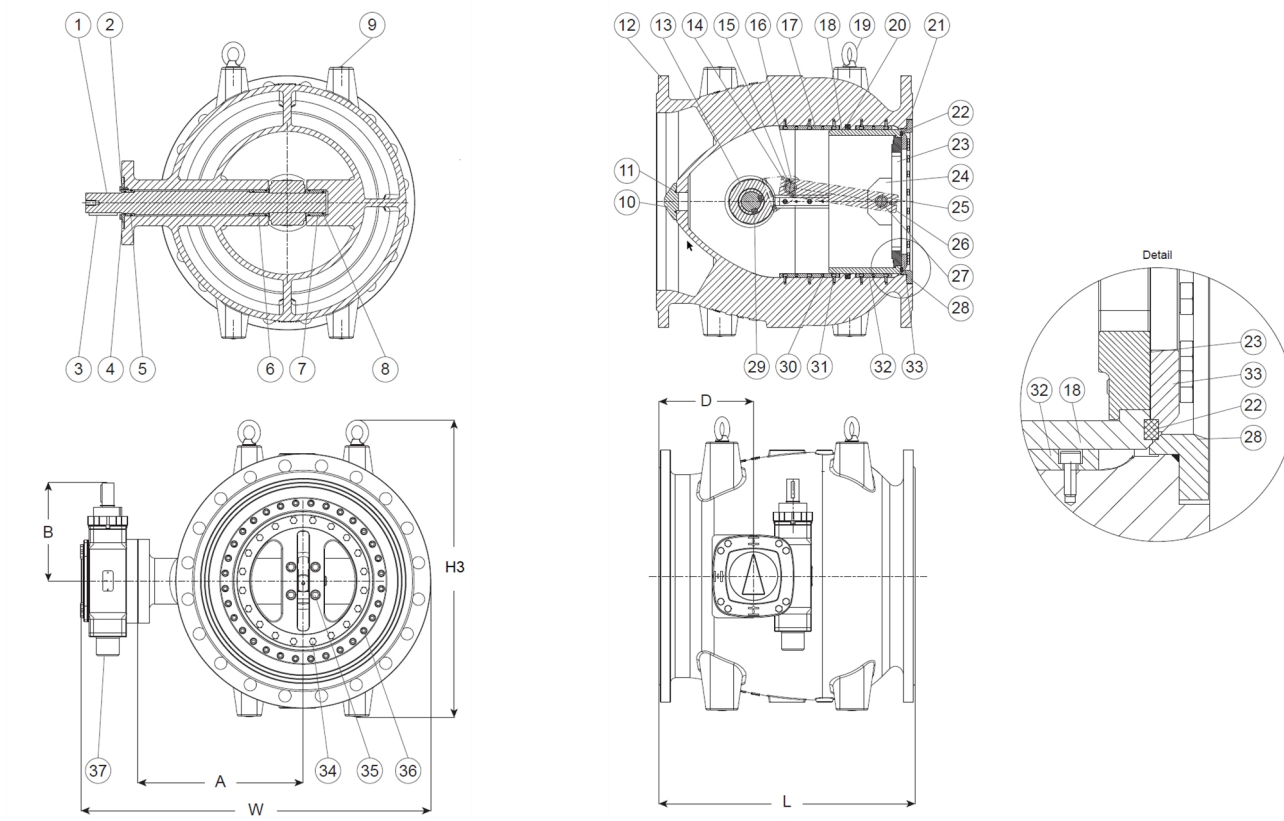
Expect... **AVK**

The designs, materials and specifications shown are subject to change without notice due to the continuous development of our product range.

AVK NEEDLE VALVE, PN25

872/00-002

DI/SS body, SS internals, A2 bolts, gearbox for ON/OFF



Component list:

1. Shaft	Stainless steel 1.4028	20. Gasket	Polyurethane
2. Screw	Stainless steel A2-70	21. O-ring	EPDM rubber
3. Key	Stainless steel	22. Gasket	Polyurethane
4. Ring cap	Alu-bronze CC333G	23. Piston flange	Stainless steel 1.4301
5. O-ring	EPDM rubber	24. Fixing plate	Stainless steel 1.4301
6. Bush	Alu-bronze CC333G	25. Bush	Alu-bronze CC333G
7. Bush	Alu-bronze CC333G	26. Connection rod	Stainless steel 1.4028
8. O-ring	EPDM rubber	27. Pin	Stainless steel 1.4028
9. Plug	Plastic	28. Body seal ring	Stainless steel 1.4301
10. Ogive	Stainless steel 1.4028	29. Key	Stainless steel
11. O-ring	EPDM rubber	30. Socket screw	Stainless steel A2-70
12. Body ⁽¹⁾	Ductile iron GJS-500-7 (GGG-50)	31. Bolt, socket head	Stainless steel A2-70
13. Crank ⁽²⁾	Ductile iron GJS-500-7 (GGG-50)	32. Guide ⁽³⁾	Brass CW617N
14. Pin	Stainless steel 1.4028	33. Fixing gasket ring	Stainless steel 1.4301
15. Split pin	Stainless steel 1.4301	34. Bolt, hexagon head	Stainless steel A2-70
16. Bush	Alu-bronze CC333G	35. Bolt, socket head	Stainless steel A2-70
17. Guide ⁽³⁾	Brass CW617N	36. Bolt, socket head	Stainless steel A2-70
18. Piston tube	Stainless steel 1.4301	37. Gearbox	
19. Eye bolt	Steel, zinc coated		

Components may be substituted with equivalent or higher class materials without prior notification.

(1) DN 80, 100 and 150: cast stainless steel 1.4308 / CF8

(2) DN 80, 100 and 150: stainless steel 1.4401 / 316

(3) DN 80, 100 and 150: cast stainless steel 1.4308 / CF8 as part of the body

The designs, materials and specifications shown are subject to change without notice due to the continuous development of our product range.

AVK NEEDLE VALVE, PN25**872/00-002****DI/SS body, SS internals, A2 bolts, gearbox for ON/OFF****Reference nos. and dimensions:**

AVK ref. no.	DN mm	Flange drilling	A mm	B mm	D mm	H3 mm	L mm	W mm	Theoretical weight/kg
872-0080-00-70900100100 ⁽¹⁾	80	PN25	125	117	100	230	260	330	31
872-0100-00-70900100100	100	PN25	145	117	120	235	300	370	42
872-0150-00-70900100100	150	PN25	175	150	135	300	350	435	75
872-0200-00-70100100000	200	PN25	220	150	150	425	400	510	105
872-0250-00-70100100000	250	PN25	260	150	165	475	450	580	161
872-0300-00-70100100000	300	PN25	305	284	185	535	500	695	289
872-0350-00-70100100000	350	PN25	345	300	205	595	550	770	308
872-0400-00-70100100000	400	PN25	385	300	235	660	600	845	430
872-0450-00-70100100000	450	PN25	415	305	240	745	650	900	511
872-0500-00-70100100000	500	PN25	445	305	245	785	700	960	683
872-0600-00-70100100000	600	PN25	505	305	280	925	800	1078	931
872-0800-00-70100100000	800	PN25	650	510	360	1180	1000	1370	1839
872-0900-00-70100100000	900	PN25	715	510	385	1350	1200	1530	2468

(1) Face to face according to EN 558, ser. 48

