



AVK PRESSURE REDUCING CONTROL VALVE, PN10/16

879/000X99-001

Reduced bore, AISI304/DI trim, AISI304 pilot, brass fittings/accs., EPDM/WRAS rubber, prot. pos. ind.

AVK series 879/0X diaphragm actuated pressure reducing control valves (PRV) automatically maintain a constant outlet pressure regardless of flow demand or changes in inlet pressure. A replaceable spring inside the pilot makes it possible to operate in different pressure ranges and still keep the high precision. Setting and adjustment on a control knob on the pilot. Both full bore and reduced bore versions are available with the full bore having full capacity and the reduced bore having increased precision and smooth regulation at low flow rates.

Product description:

Control valve, pressure reducing, for drinking water or other neutral liquids to max. 70°C

Design standards:

- EN 1074-5
- Face-to-face dimension according to EN 558 Table 2 Basic Series 1
- Flange drilling to EN1092, PN10/16

Test/Approvals:

- Hydraulic test: 1.5 x PN
- Tested according to EN 12266-1
- Approved according to WRAS Certificate 2010005, series 879
- Approved according to ACS-FRANCE, certificate 20ACCLY795, ser.879

Features:

- The lifted seat design controls the flow around the plug so that in case of cavitation this happens with minimal damage away from plug and seat
- The parabolic shape of the plug creates a smooth regulating characteristic with low gain around the near-closed positions improving control performance at low flow
- Non-symmetric axial position of rubber diaphragm results in low stretch stress when closed
- Body and bonnet of ductile iron coated with fusion bonded epoxy, 300µm, GSK approved, RAL 5017, according to DIN 3476 and WRAS-DVGW/W270/UBA
- All rubber parts approved for drinking water
- All non-coated internals made of stainless steel or bronze
- Seat and pilot in stainless steel AISI 304
- Fittings, pipes and accessories in Ni-plated brass
- A needle valve between upstream side and control chamber allows for adjustment of the regulation reaction time
- Closing the needle valve isolates the control chamber and fixes the position of the main valve allowing for service of the pilot valve

Accessories:

V-port or anti-cavitation cage, double pressure gauge, low-flow by-pass, visual position indicator, inductive position switch, position transmitter 4-20 mA



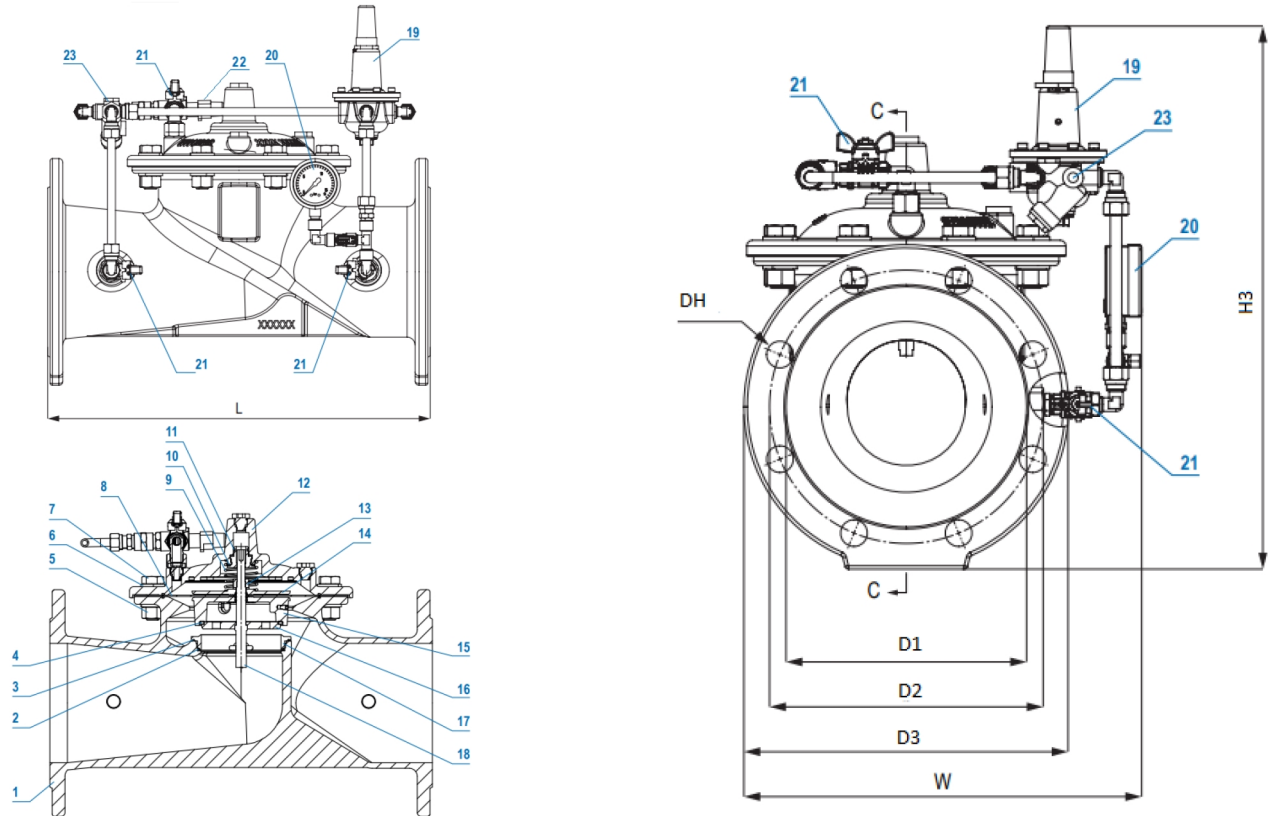
Expect... **AVK**

The designs, materials and specifications shown are subject to change without notice due to the continuous development of our product range.

AVK PRESSURE REDUCING CONTROL VALVE, PN10/16

879/000X99-001

Reduced bore, AISI304/DI trim, AISI304 pilot, brass fittings/accs., EPDM/WRAS rubber, prot. pos. ind.



Component list:

| | | | |
|-----------------|--------------------------|--------------------------|--------------------------|
| 1. Body | Ductile iron GJS-500-7 | 13. Hex nut | Stainless steel A2 |
| 2. O-ring | EPDM rubber | 14. Diaphragm support | Ductile iron GJS-500-7 |
| 3. O-ring | EPDM rubber | 15. Obturator | Ductile iron GJS-500-7 |
| 4. Plug sealing | EPDM rubber | 16. Regulating plug | Stainless steel AISI 304 |
| 5. Hex nut | Stainless steel A2 | 17. Seat | Stainless steel AISI 304 |
| 6. Washer | Stainless steel AISI 304 | 18. Stem | Stainless steel AISI 304 |
| 7. Bolts | Stainless steel A2 | 19. Pilot valve | Stainless steel |
| 8. Diaphragm | EPDM rubber | 20. Pressure gauge | Stainless steel |
| 9. Spring | Stainless steel AISI 304 | 21. Ball valve | Nickel Brass |
| 10. Flat seal | EPDM rubber | 22. Needle valve | Stainless steel |
| 11. Flat seal | EPDM rubber | 23. Y-strainer / Orifice | Brass + SS 316 |
| 12. Cover | Ductile iron GJS-500-7 | | |

Components may be substituted with equivalent or higher class materials without prior notification.

Reference nos. and dimensions:

| AVK ref. no. | DN | Flange | Pilot range | D1 | D2 | D3 | Dh | W | H3 | L | Theoretical weight/kg |
|-----------------------------|-----|----------|-------------|-----|-----|-----|----|-----|-----|-----|-----------------------|
| | mm | drilling | bar | mm | mm | mm | mm | mm | mm | mm | |
| 879-0065-00-14400059999 | 65 | PN16 | 2-15 | 118 | 145 | 185 | 19 | 265 | 380 | 290 | 20 |
| 879-0065-00-144000599A0 (1) | 65 | PN16 | 2-15 | 118 | 145 | 185 | 19 | 265 | 424 | 290 | 20 |
| 879-0080-00-14400059999 | 80 | PN16 | 2-15 | 132 | 160 | 200 | 19 | 280 | 405 | 310 | 23 |
| 879-0080-00-144000599A0 (1) | 80 | PN16 | 2-15 | 132 | 160 | 200 | 19 | 280 | 447 | 310 | 23 |
| 879-0100-00-14400059999 | 100 | PN16 | 2-15 | 156 | 180 | 220 | 19 | 291 | 420 | 350 | 28 |
| 879-0100-00-144000599A0 (1) | 100 | PN16 | 2-15 | 156 | 180 | 220 | 19 | 291 | 461 | 350 | 28 |
| 879-0125-00-14400059999 | 125 | PN16 | 2-15 | 184 | 210 | 250 | 19 | 320 | 440 | 400 | 32 |
| 879-0125-00-144000599A0 (1) | 125 | PN16 | 2-15 | 184 | 210 | 250 | 19 | 320 | 480 | 400 | 32 |
| 879-0150-00-14400059999 | 150 | PN16 | 2-15 | 211 | 240 | 285 | 23 | 350 | 480 | 480 | 45 |
| 879-0150-00-144000599A0 (1) | 150 | PN16 | 2-15 | 211 | 240 | 285 | 23 | 350 | 514 | 480 | 45 |
| 879-0200-00-04400059999 | 200 | PN10 | 2-15 | 266 | 295 | 340 | 23 | 405 | 600 | 600 | 95 |

The designs, materials and specifications shown are subject to change without notice due to the continuous development of our product range.

AVK PRESSURE REDUCING CONTROL VALVE, PN10/16**879/000X99-001****Reduced bore, AISI304/DI trim, AISI304 pilot, brass fittings/accs., EPDM/WRAS rubber, prot. pos. ind.****Reference nos. and dimensions:**

| AVK ref. no. | DN | Flange | Pilot range | D1 | D2 | D3 | Dh | W | H3 | L | Theoretical weight/kg |
|--|-----|----------|-------------|-----|-----|-----|----|-----|------|------|-----------------------|
| | mm | drilling | bar | mm | mm | mm | mm | mm | mm | mm | |
| 879-0200-00-044000599A0 ⁽¹⁾ | 200 | PN10 | 2-15 | 266 | 295 | 340 | 23 | 405 | 688 | 600 | 95 |
| 879-0200-00-14400059999 | 200 | PN16 | 2-15 | 266 | 295 | 340 | 23 | 405 | 600 | 600 | 95 |
| 879-0200-00-144000599A0 ⁽¹⁾ | 200 | PN16 | 2-15 | 266 | 295 | 340 | 23 | 405 | 688 | 600 | 95 |
| 879-0250-00-04400059999 | 250 | PN10 | 2-15 | 319 | 350 | 395 | 23 | 470 | 720 | 730 | 156 |
| 879-0250-00-044000599A0 ⁽¹⁾ | 250 | PN10 | 2-15 | 319 | 350 | 395 | 23 | 470 | 806 | 730 | 156 |
| 879-0250-00-14400059999 | 250 | PN16 | 2-15 | 319 | 355 | 405 | 28 | 470 | 720 | 730 | 156 |
| 879-0250-00-144000599A0 ⁽¹⁾ | 250 | PN16 | 2-15 | 319 | 355 | 405 | 28 | 470 | 806 | 730 | 156 |
| 879-0300-00-04400059999 | 300 | PN10 | 2-15 | 370 | 400 | 445 | 23 | 525 | 795 | 850 | 220 |
| 879-0300-00-044000599A0 ⁽¹⁾ | 300 | PN10 | 2-15 | 370 | 400 | 445 | 23 | 525 | 881 | 850 | 220 |
| 879-0300-00-14400059999 | 300 | PN16 | 2-15 | 370 | 410 | 460 | 28 | 525 | 795 | 850 | 220 |
| 879-0300-00-144000599A0 ⁽¹⁾ | 300 | PN16 | 2-15 | 370 | 410 | 460 | 28 | 525 | 881 | 850 | 220 |
| 879-0350-00-04400059999 | 350 | PN10 | 2-15 | 429 | 460 | 505 | 23 | 585 | 870 | 980 | 323 |
| 879-0350-00-044000599A0 ⁽¹⁾ | 350 | PN10 | 2-15 | 429 | 460 | 505 | 23 | 585 | 959 | 980 | 323 |
| 879-0350-00-14400059999 | 350 | PN16 | 2-15 | 429 | 470 | 520 | 28 | 585 | 870 | 980 | 323 |
| 879-0350-00-144000599A0 ⁽¹⁾ | 350 | PN16 | 2-15 | 429 | 470 | 520 | 28 | 585 | 959 | 980 | 323 |
| 879-0400-00-04400059999 | 400 | PN10 | 2-15 | 480 | 515 | 565 | 28 | 645 | 995 | 1100 | 494 |
| 879-0400-00-044000599A0 ⁽¹⁾ | 400 | PN10 | 2-15 | 480 | 515 | 565 | 28 | 645 | 1159 | 1100 | 494 |
| 879-0400-00-14400059999 | 400 | PN16 | 2-15 | 480 | 525 | 580 | 31 | 645 | 995 | 1100 | 494 |
| 879-0400-00-144000599A0 ⁽¹⁾ | 400 | PN16 | 2-15 | 480 | 525 | 580 | 31 | 645 | 1159 | 1100 | 494 |
| 879-0450-00-04400059999 | 450 | PN10 | 2-15 | 530 | 565 | 615 | 28 | 705 | 1060 | 1200 | 641 |
| 879-0450-00-044000599A0 ⁽¹⁾ | 450 | PN10 | 2-15 | 530 | 565 | 615 | 28 | 705 | 1220 | 1200 | 641 |
| 879-0450-00-14400059999 | 450 | PN16 | 2-15 | 548 | 585 | 640 | 31 | 705 | 1060 | 1200 | 641 |
| 879-0450-00-144000599A0 ⁽¹⁾ | 450 | PN16 | 2-15 | 548 | 585 | 640 | 31 | 705 | 1220 | 1200 | 641 |
| 879-0500-00-04400059999 | 500 | PN10 | 2-15 | 582 | 620 | 670 | 28 | 780 | 1245 | 1250 | 931 |
| 879-0500-00-044000599A0 ⁽¹⁾ | 500 | PN10 | 2-15 | 582 | 620 | 670 | 28 | 780 | 1408 | 1250 | 931 |
| 879-0500-00-14400059999 | 500 | PN16 | 2-15 | 609 | 650 | 715 | 34 | 780 | 1245 | 1250 | 931 |
| 879-0500-00-144000599A0 ⁽¹⁾ | 500 | PN16 | 2-15 | 609 | 650 | 715 | 34 | 780 | 1408 | 1250 | 931 |
| 879-0600-00-04400059999 | 600 | PN10 | 2-15 | 682 | 725 | 780 | 31 | 905 | 1355 | 1450 | 1268 |
| 879-0600-00-044000599A0 ⁽¹⁾ | 600 | PN10 | 2-15 | 682 | 725 | 780 | 31 | 905 | 1518 | 1450 | 1268 |
| 879-0600-00-14400059999 | 600 | PN16 | 2-15 | 720 | 770 | 840 | 37 | 905 | 1355 | 1450 | 1268 |
| 879-0600-00-144000599A0 ⁽¹⁾ | 600 | PN16 | 2-15 | 720 | 770 | 840 | 37 | 905 | 1518 | 1450 | 1268 |

⁽¹⁾ Incl. position indicator