



## AVK PRESSURE REDUCING CONTROL VALVE, PN10/16

879/100X99-001

Full bore, AISI304/DI trim, AISI304 pilot, brass fittings/accs., EPDM/WRAS rubber, protected pos. ind.

AVK series 879 diaphragm actuated pressure reducing control valves (PRV) automatically maintain a constant outlet pressure regardless of flow demand or changes in inlet pressure. A replaceable spring inside the pilot makes it possible to operate in different pressure ranges and still keep the high precision. Setting and adjustment on a control knob on the pilot. Both full bore and reduced bore versions are available with the full bore having full capacity and the reduced bore having increased precision and smooth regulation at low flow rates.

### Product description:

Control valve, pressure reducing, for drinking water or other neutral liquids to max. 70°C

### Standards:

- Designed according to EN 1074-5
- Face-to-face dimension according to EN 558 Table 2 Basic Series 1
- Flange drilling to EN1092, PN10/16

### Test/Approvals:

- Tested according to EN12266-1.
- Hydraulic test: 1.5 x PN
- WRAS approved materials

### Features:

- The lifted seat design controls the flow around the plug so that in case of cavitation this happens with minimal damage away from plug and seat
- The parabolic shape of the plug creates a smooth regulating characteristic with low gain around the near-closed positions improving control performance at low flow
- Non-symmetric axial position of rubber diaphragm results in low stretch stress when closed
- Body and bonnet of ductile iron coated with fusion bonded epoxy, 300µm, GSK approved, RAL 5017, according to DIN 3476 and WRAS-DVGW/W270/UBA
- All rubber parts approved for drinking water
- All non-coated internals made of stainless steel or bronze
- Seat and pilot in stainless steel AISI 304
- A needle valve fitted between the upstream side and the control chamber allows for adjustment of the regulation reaction time
- Closing the needle valve isolates the control chamber and fixes the position of the main valve allowing for service of the pilot valve
- Fittings, pipes and accessories in Ni-plated brass

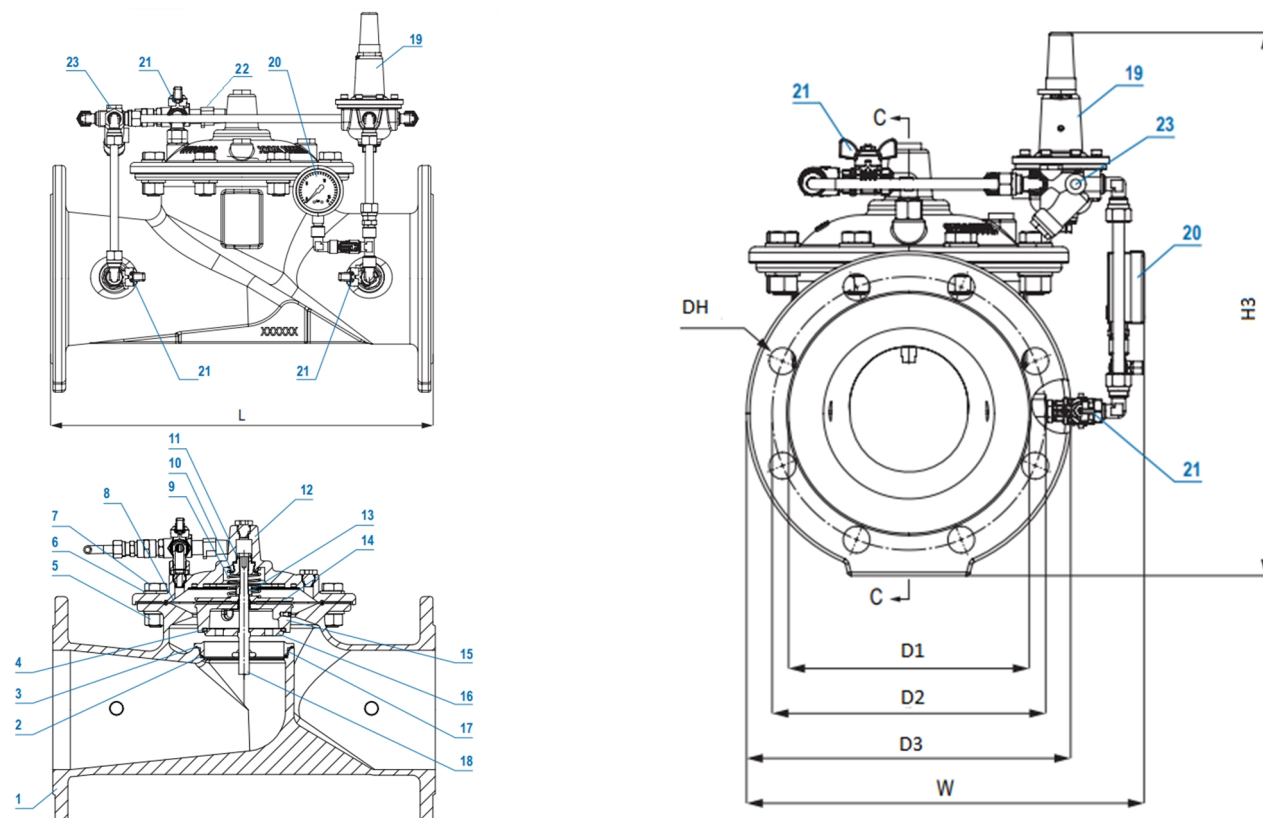
### Accessories:

V-port or anti-cavitation cage, pressure gauge, circuit by-pass, visual position indicator, inductive position switch, position transmitter 4-20 mA



Expect... **AVK**

The designs, materials and specifications shown are subject to change without notice due to the continuous development of our product range.

**AVK PRESSURE REDUCING CONTROL VALVE, PN10/16****879/100X99-001****Full bore, AISI304/DI trim, AISI304 pilot, brass fittings/accs., EPDM/WRAS rubber, protected pos. ind.****Component list:**

1. Body	Ductile iron GJS-500-7	13. Hex nut	Stainless steel A2
2. O-ring	EPDM rubber	14. Diaphragm support	Ductile iron GJS-500-7
3. O-ring	EPDM rubber	15. Obturator	Ductile iron GJS-500-7
4. Plug sealing	EPDM rubber	16. Regulating plug	Stainless steel 304
5. Hex nut	Stainless steel A2	17. Seat	Stainless steel 304
6. Washer	Stainless steel 304	18. Stem	Stainless steel 304
7. Bolts	Stainless steel A2	19. Pilot valve	Stainless steel
8. Diaphragm	EPDM rubber	20. Pressure gauge	Stainless steel
9. Spring	Stainless steel 304	21. Ball valve	Nickel Brass
10. Flat seal	EPDM rubber	22. Needle valve	Stainless steel
11. Flat seal	EPDM rubber	23. Y-strainer / Orifice	Brass + SS 316
12. Cover	Ductile iron GJS-500-7		

Components may be substituted with equivalent or higher class materials without prior notification.

**Reference nos. and dimensions:**

AVK ref. no.	DN mm	Flange drilling	Pilot range bar	D1 mm	D2 mm	D3 mm	Dh mm	H3 mm	L mm	W mm	Theoretical weight/kg
879-0050-10-14400059999	50	PN10/16	2-15	99	125	165	19	370	230	266	17
879-0050-10-144000599A0 (1)	50	PN10/16	2-15	99	125	165	19	407	230	266	17
879-0065-10-14400059999	65	PN10/16	2-15	118	145	185	19	395	290	285	22
879-0065-10-144000599A0 (1)	65	PN10/16	2-15	118	145	185	19	436	290	285	22
879-0080-10-14400059999	80	PN10/16	2-15	132	160	200	19	410	310	300	26
879-0080-10-144000599A0 (1)	80	PN10/16	2-15	132	160	200	19	451	310	300	26
879-0100-10-14400059999	100	PN10/16	2-15	156	180	220	19	430	350	320	35
879-0100-10-144000599A0 (1)	100	PN10/16	2-15	156	180	220	19	474	350	320	35
879-0150-10-14400059999	150	PN10/16	2-15	211	240	285	23	575	480	385	81
879-0150-10-144000599A0 (1)	150	PN10/16	2-15	211	240	285	23	607	480	385	81
879-0200-10-04400059999	200	PN10	2-15	266	295	340	23	690	600	420	137
879-0200-10-044000599A0 (1)	200	PN10	2-15	266	295	340	23	774	600	420	137

The designs, materials and specifications shown are subject to change without notice due to the continuous development of our product range.

**AVK PRESSURE REDUCING CONTROL VALVE, PN10/16****879/100X99-001****Full bore, AISI304/DI trim, AISI304 pilot, brass fittings/accs., EPDM/WRAS rubber, protected pos. ind.****Reference nos. and dimensions:**

AVK ref. no.	DN mm	Flange drilling	Pilot range bar	D1 mm	D2 mm	D3 mm	Dh mm	H3 mm	L mm	W mm	Theoretical weight/kg
879-0200-10-14400059999	200	PN16	2-15	266	295	340	23	690	600	420	137
879-0200-10-144000599A0 <sup>(1)</sup>	200	PN16	2-15	266	295	340	23	774	600	420	137
879-0250-10-04400059999	250	PN10	2-15	319	350	395	23	770	730	485	198
879-0250-10-044000599A0 <sup>(1)</sup>	250	PN10	2-15	319	350	395	23	854	730	485	198
879-0250-10-14400059999	250	PN16	2-15	319	355	405	28	770	730	485	198
879-0250-10-144000599A0 <sup>(1)</sup>	250	PN16	2-15	319	355	405	28	854	730	485	198
879-0300-10-04400059999	300	PN10	2-15	370	400	445	23	835	850	540	255
879-0300-10-044000599A0 <sup>(1)</sup>	300	PN10	2-15	370	400	445	23	923	850	540	255
879-0300-10-14400059999	300	PN16	2-15	370	410	460	28	835	850	540	255
879-0300-10-144000599A0 <sup>(1)</sup>	300	PN16	2-15	370	410	460	28	923	850	540	255
879-0350-10-04400059999	350	PN10	2-15	429	460	505	23	960	980	600	456
879-0350-10-044000599A0 <sup>(1)</sup>	350	PN10	2-15	429	460	505	23	1045	980	600	456
879-0350-10-14400059999	350	PN16	2-15	429	470	520	28	960	980	600	456
879-0350-10-144000599A0 <sup>(1)</sup>	350	PN16	2-15	429	470	520	28	1045	980	600	456
879-0400-10-04400059999	400	PN10	2-15	480	515	565	28	1020	1100	660	542
879-0400-10-044000599A0 <sup>(1)</sup>	400	PN10	2-15	480	515	565	28	1183	1100	660	542
879-0400-10-14400059999	400	PN16	2-15	480	525	580	31	1020	1100	660	542
879-0400-10-144000599A0 <sup>(1)</sup>	400	PN16	2-15	480	525	580	31	1183	1100	660	542
879-0450-10-04400059999	450	PN10	2-15	530	565	615	28	1200	1200	720	868
879-0450-10-044000599A0 <sup>(1)</sup>	450	PN10	2-15	530	565	615	28	1361	1200	720	868
879-0450-10-14400059999	450	PN16	2-15	548	585	640	31	1200	1200	720	868
879-0450-10-144000599A0 <sup>(1)</sup>	450	PN16	2-15	548	585	640	31	1361	1200	720	868
879-0500-10-04400059999	500	PN10	2-15	582	620	670	28	1270	1250	795	1113
879-0500-10-044000599A0 <sup>(1)</sup>	500	PN10	2-15	582	620	670	28	1435	1250	795	1113
879-0500-10-14400059999	500	PN16	2-15	609	650	715	34	1270	1250	795	1113
879-0500-10-144000599A0 <sup>(1)</sup>	500	PN16	2-15	609	650	715	34	1435	1250	795	1113
879-0600-10-04400059999	600	PN10	2-15	682	725	780	31	1420	1450	920	1672
879-0600-10-044000599A0 <sup>(1)</sup>	600	PN10	2-15	682	725	780	31	1584	1450	920	1672
879-0600-10-14400059999	600	PN16	2-15	720	770	840	37	1420	1450	920	1672
879-0600-10-144000599A0 <sup>(1)</sup>	600	PN16	2-15	720	770	840	37	1584	1450	920	1672

<sup>(1)</sup> Incl. position indicator